



# Rapid assessment of acute environmental risks after Hurricane Dorian

**The Bahamas**  
**September 2019**



**JOINT  
ENVIRONMENT  
UNIT**



*Published in Switzerland, 2019 by the UNEP/OCHA Joint Environment Unit, Response Support Branch, OCHA*

*Copyright © 2019 UNEP/OCHA Joint Environment Unit*

*This report is based on the information received and gathered during the mission and therefore cannot be seen as exhaustive, but can be considered as representative of the existing situation. All information has been compiled by the experts on mission based upon best available knowledge when drafted.*

*This publication may be reproduced in whole or in part and in any form for educational or not-for-profit purposes without special permission from the copyright holder, provided acknowledgement is made of the source.*

*UNEP/OCHA Joint Environment Unit  
Response Support Branch, Office for the Coordination of Humanitarian Affairs (OCHA)  
Palais des Nations  
CH-1211 Geneva 10  
Switzerland  
ochaunep@un.org*

*Report Editor: Margherita Fanchiotti, UNEP/OCHA Joint Environment Unit  
Cover photo: Drone view of Marsh Harbour, Abaco Islands, The Bahamas after Hurricane Dorian (© Samaritan's Purse)*

## Table of Contents

Executive summary	5
List of abbreviations, acronyms and glossary of terms	6
1. Mission background and scope	7
1.1 Context	8
1.2 Mission objective	10
2. Timeline	10
3. Key activities and outputs	12
3.1 Key activities	12
3.2 Key outputs	13
4. Structure of the report	13
References	13

*The **UNEP/OCHA Joint Environment Unit (JEU)** responds as one UN to the environmental dimensions of emergencies. The Unit pairs UN Environment Programme's environmental expertise with the OCHA-coordinated humanitarian network. By coordinating international efforts and mobilizing partners, the JEU assists countries affected by disasters and crisis and works to enhance the environmental sustainability of humanitarian action. The JEU provides independent, impartial advice and practical solutions, while working with organizations dedicated to medium- and long-term rehabilitation to ensure a seamless transition from emergency response to recovery. The team manages the [EHA Connect digital tool](#), as well as the [Environmental Emergencies Centre](#).*

*The **United Nations Disaster Assessment and Coordination (UNDAC)** is part of the international emergency response system for sudden-onset emergencies. UNDAC is designed to help the United Nations and governments of disaster-affected countries during the first phase of a sudden-onset emergency.*



## Executive summary

On 1 September 2019, Hurricane Dorian made landfall as a Category 5 hurricane on Abaco Islands, The Bahamas, before moving over Grand Bahama Island, The Bahamas. As of 29 October, the official death toll stood at 67, and is expected to rise given that over 200 people were still missing. The hurricane left a trail of devastation, with destroyed buildings, uprooted trees and significant disruptions to basic services on both islands.

Key environmental concerns in the aftermath of Dorian included: i) the management of large quantities of disaster waste generated by the hurricane; ii) the confirmed inland spill of crude oil and any potential spills at sea from Equinor's oil storage facility on Grand Bahama Island; and iii) any potential secondary and cascading impacts resulting from damages to the numerous hazardous operation facilities located on Abaco and Grand Bahama Islands.

To support the government-led response to Hurricane Dorian, a United Nations Disaster Assessment and Coordination (UNDAC) team was deployed to The Bahamas from 8 to 28 September. The team embedded an environmental expert from the UNEP/OCHA Joint Environment Unit (JEU). The expert moved across New Providence, Abaco and Grand Bahama Islands to equally support efforts in Nassau, Marsh Harbour and Freeport. In Grand Bahama, the expert was joined by one representative of the Ministry of the Environment, two oil spill experts mobilized by the JEU through the European Union Civil Protection Mechanism (UCPM) and a UCPM liaison officer to specifically address oil spill concerns, in liaison with the United States Coast Guard.

The main objective of the overall mission was to provide technical advice to national and local authorities to rapidly identify, assess and mitigate any negative environmental impacts following the event, with an emphasis on those that posed immediate life-threatening risks to humans (both local communities and responders); advise on required follow-up actions; promote the early integration of environmental considerations in assessments and overall response efforts; facilitate knowledge sharing and information exchange among national and international counterparts on environmental matters; and deliver recommendations accordingly.

The mission outcomes showed that special considerations on hazardous waste should be incorporated in a comprehensive disaster waste management strategy and any ongoing clean-up efforts should be linked to this strategy. Acute environmental risks on Abaco Islands deriving from some of the worst impacted hazardous operation facilities have been rapidly mitigated to prevent cascading negative humanitarian and environmental impacts, but timely follow-up by the operators at all sites of concern is required to restore safety. There is no evidence of the presence of crude oil at sea resulting from the damage on Equinor's oil storage facility. Response to the inland spill will require an agreement between national authorities and the operator on the endpoints of clean-up efforts. This should aim at minimizing the generation of waste by promoting reusing and recycling to the extent possible, while ensuring adequate removal of contaminated products. The incident further highlighted the opportunity to strengthen existing capacities and enhance readiness for any similar events in the future.

## List of abbreviations, acronyms and glossary of terms

<b>BEST</b>	Bahamas Environment, Science and Technology
<b>BPL</b>	Bahamas Power and Light (Company Limited)
<b>CARPHA</b>	Caribbean Public Health Agency
<b>CCA</b>	The Clean Caribbean & Americas
<b>CDC</b>	Centers for Disease Control and Prevention
<b>CDEMA</b>	Caribbean Disaster Emergency Management Agency
<b>DEHS</b>	Department of Environmental Health Services
<b>ECHO</b>	European Commission's Directorate-General for Civil Protection and Humanitarian Aid
<b>FEAT</b>	Flash Environmental Assessment Tool
<b>HNS</b>	Hazardous Noxious Substance
<b>IFRC</b>	International Federation of Red Cross and Red Crescent Societies
<b>IMDG</b>	International Maritime Dangerous Goods
<b>IMO</b>	International Maritime Organization
<b>IOM</b>	International Organization for Migration
<b>IPIECA</b>	International Petroleum Industry Environmental Conservation Association
<b>ITOPF</b>	International Tanker Owners Pollution Federation Limited
<b>JEU</b>	UNEP/OCHA Joint Environment Unit
<b>MSB</b>	Swedish Civil Contingencies Agency
<b>NCP</b>	National Oil Spill Contingency Plan of the Commonwealth of The Bahamas
<b>NEMA</b>	National Emergency Management Agency
<b>NGO</b>	Non-Governmental Organization
<b>NOSCAT</b>	National Maritime Policy Steering Committee
<b>OCHA</b>	(UN) Office for the Coordination of Humanitarian Affairs
<b>OPRC</b>	Oil Pollution Preparedness and Response Code
<b>OSRL</b>	Oil Spill Response Limited
<b>PAHO</b>	Pan American Health Organization
<b>PMAC</b>	Port Managers Association of the Caribbean
<b>POSOW</b>	Preparedness for Oil-polluted Shoreline cleanup and Oiled Wildlife interventions
<b>PPE</b>	Personal Protective Equipment
<b>RNAT</b>	Rapid Needs Assessment Team
<b>UCPM</b>	(European) Union Civil Protection Mechanism
<b>UN</b>	United Nations
<b>UNDAC</b>	United Nations Disaster Assessment and Coordination
<b>UNDP</b>	United Nations Development Programme
<b>UNEP</b>	United Nations Environment Programme
<b>WFP</b>	World Food Programme
<b>WHO</b>	World Health Organization

## 1. Mission background and scope

On 1 September 2019 at 12:45 PM EST, Hurricane Dorian made landfall as a Category 5 hurricane at Elbow Cay, Abaco Islands, The Bahamas, with wind speeds of 185 mph. Starting on 2 September at 2:00 PM EST, Dorian moved over Grand Bahama Island, The Bahamas. An all-clear was issued on 4 September.

As of 29 October, the official death count stood at 67, expected to rise given that over 200 people were still missing. The hurricane left a trail of devastation, with destroyed buildings, uprooted trees and significant disruptions to basic services on Abaco and Grand Bahama Islands. Environmental concerns arose quickly in the aftermath of the event, notably in relation to disaster waste management, crude oil contamination - as a result of damage to Equinor's oil storage facility on Grand Bahama Island - and other impacts on hazardous operation facilities on both islands.

The National Emergency Management Agency (NEMA) is in charge of overall emergency management and established an Emergency Operations Centre (EOC) in Nassau, with satellite EOC's on Abaco and Grand Bahama Islands led by the local government representation<sup>1</sup>. Coordination is channeled through a set of Emergency Support Functions (ESFs) representing key sectors. Among these, the Ministry of the Environment is leading work on environmental and hazmat risks under the related ESF.

To complement national efforts, two Regional Needs Assessment Teams (RNATs) led by the Caribbean Disaster Emergency Management Agency (CDEMA) were pre-positioned in Nassau as of 31 August. The teams consisted of 18 members from CDEMA Participating States, the Caribbean Public Health Agency (CARPHA), Global Affairs Canada, the Pan American Health Organization (PAHO), the Port Managers Association of the Caribbean (PMAC), the private sector, the World Food Programme (WFP) and the United Nations Office for the Coordination of Humanitarian Affairs (OCHA).

Surge staff from OCHA Regional Office as well as a United Nations Disaster Assessment and Coordination (UNDAC) team was subsequently dispatched in the immediate aftermath of the event to support the government-led response. The UNDAC team embedded an environmental expert from the United Nations Environment Programme (UNEP)/OCHA Joint Environment Unit (JEU). The role of the expert, deployed from 8 to 28 September, was to rapidly identify and advise on acute environmental risks on Abaco and Grand Bahama Islands.

At the request of the Ministry of the Environment through the Bahamas Environment, Science and Technology (BEST) Commission, an environment team comprising one representative from the BEST Commission, the UNDAC environment lead, two oil spill experts mobilized by the JEU through the European Union Civil Protection Mechanism (UCPM) and a UCPM liaison officer was subsequently deployed to Grand Bahama Island between 21 and 29 September to provide technical advice on the environmental impacts of the oil spill, in close collaboration with local authorities and the United States Coast Guard.

---

<sup>1</sup> MapAction. The Bahamas: Hurricane Dorian. Coordination sites.  
[https://maps.mapaction.org/dataset/13275a57-719b-4c7f-bebf-bd5d0858d3e6/resource/33a13f7a-bbbc-4e3a-8266-36d28e07d1f1/download/ma058\\_coordination\\_sites-300dpi.pdf](https://maps.mapaction.org/dataset/13275a57-719b-4c7f-bebf-bd5d0858d3e6/resource/33a13f7a-bbbc-4e3a-8266-36d28e07d1f1/download/ma058_coordination_sites-300dpi.pdf)

## 1.1 Context

Environmental concerns were flagged as a key priority by national and local authorities in the immediate aftermath of the hurricane. This was reflected in the emergency response coordination structure, with a dedicated ESF led by the Ministry of the Environment.

In particular, the hurricane generated large quantities of disaster waste. Aerial footage of the affected areas as well as site surveys show widespread disaster waste (Figures 1 and 2), including hazardous waste that requires adequate disposal. Disaster waste threatens human health, hinders recovery and reconstruction efforts and can significantly impact the environment.



*Figures 1 (left) and 2 (right): disaster waste generated by Hurricane Dorian on Abaco Islands*

The International Federation of Red Cross and Red Crescent Societies (IFRC) preliminarily estimated that there could be as many as 13,000 houses damaged or destroyed. Assessments result later found that an estimated 7,235 households were damaged in Central and East Grand Bahama only.

Disaster waste hampered access to key humanitarian routes after the hurricane. While debris clearance was initiated in the immediate response phase to restore access, no considerations on waste segregation and handling hazardous materials were applied in practice, posing challenges for post-disaster management. Landfill capacities on both islands are limited compared to the amount of waste produced, requiring the identification of temporary disposal sites.

The Ministry of Public Works and the Ministry of the Environment have been co-leading work on debris and overall disaster waste management. The Department of Environmental Health Services (DEHS) of the Ministry of the Environment, in particular, has been working on the development of a disaster waste

management plan to address all types of waste, moving beyond debris removal to systematically look at hazardous waste too.

Several hazardous operation facilities are located on Abaco and Grand Bahama Islands, many of which were severely impacted by Dorian (Figures 3 and 4), leading to the generation of hazardous waste and with potential for additional negative impacts to human health, livelihoods and the environment.



*Figures 3 (left) and 4 (right): damaged gas station in Cooper's Town, Abaco Islands (left); diesel fuel leak at Marsh Harbour power sub-station (right)*

Dorian significantly impacted one of two oil storage facilities located on Grand Bahama Island, with a confirmed inland spill of crude oil from Equinor's South Riding Point terminal. Operations at the terminal were shut down on 31 August as a precautionary measure in view of the hurricane warning. On 5 September, Equinor reported<sup>2</sup> that the facility had sustained damage based on findings from preliminary aerial assessment. An inland spill of crude oil towards the northeast was confirmed and noticeable from photo evidence made available by PAHO after an aerial assessment conducted on 4 September, further to the all-clear (see Figure 5 below). The operator subsequently engaged oil spill response resources to respond to the event and initiate the clean-up.

Several unconfirmed reports of oil spills at sea were circulating on international media prior to the mission, with the operator maintaining that no oil was leaking from the terminal based on results of their assessments<sup>3</sup>.

<sup>2</sup> <https://equinor.com/en/news/2019-09-05-bahamas.html>

<sup>3</sup> <https://www.equinor.com/en/news/2019-09-12-oil-spill-recovery-bahamas.html>





*Figure 5: Inland spill of crude oil from Equinor oil storage facility as of 4 September 2019 (© PAHO)*

## **1.2 Mission objective**

The objective of the environmental mission was to provide technical advice to national and local authorities to:

- Rapidly identify, assess and mitigate any negative environmental impacts following the event, with an emphasis on those that pose immediate life-threatening risks to humans (both local communities and responders);
- Advise on short-, medium- and long-term follow-up measures to address and mitigate those hazards;
- Promote the early consideration of environmental risks and any potential cascading impacts in disaster response coordination and assessments;
- Facilitate knowledge sharing and information management on environmental matters;
- Identify needs for additional specialized expertise and/or equipment as required.

The mission took place from 8 to 29 September 2019 as part of the UNDAC support to government-led response efforts in The Bahamas. It was conducted in close collaboration with relevant local, national and regional authorities, as well as other international emergency responders.

## **2. Timeline**

The overall mission timeline, including key events, is provided in Figure 6 on the following page.



Figure 6: Timeline



### 3. Key activities and outputs

#### 3.1 Key activities

An overview of the main activities completed during the mission is provided below.

##### Overall

- Technical advice to national authorities for the development of a comprehensive disaster waste management plan to deal with accumulated debris, including special considerations for hazardous waste, in liaison with other international responders working in the area (namely, the United Nations Development Programme (UNDP), the International Organization for Migration (IOM) and Swiss Agency for Development and Cooperation).
- Sharing of international guidance materials for disaster waste management, including for asbestos.

##### Abaco Islands

- Mapping of hazardous operation facilities on the islands.
- Determination of maximum extent of potential adverse impact zones for human health, soil and water contamination. This was done using the Flash Environmental Assessment Tool (FEAT)<sup>4</sup>, developed by the Joint Environment Unit to rapidly assess potential risks in terms of human health, livelihoods and the environment as a result of spilling of chemical substances during emergencies.
- Rapid assessment of mapped hazardous operation facilities across the islands, with support from the Dutch Military Forces.
- Rapid intervention at sites of concern, in liaison with the operators and the Royal Defence Force, with support from the Dutch Military Forces.

##### Grand Bahama Island

- Mapping of hazardous operation facilities on the islands.
- Determination of maximum extent of potential adverse impact zones for human health, soil and water contamination. This was also done using the Flash Environmental Assessment Tool (FEAT), which allowed for a quick assessment of the possible risks to human health, livelihoods and the environment.
- Technical advice provided to the Ministry of the Environment to understand the impacts at sea of the oil spill resulting from the impact of Hurricane Dorian on Equinor's oil storage facility, to develop a plan for assessing the environmental impacts of the spill inland and to support oversight on the response actions undertaken by the operator.

---

<sup>4</sup> <https://www.eecentre.org/resources/feat/>

### 3.2 Key outputs

The following information products were delivered to showcase findings from implementation of the above-mentioned activities, with support from MapAction and Copernicus Emergency Management Service.

- Reference map of hazardous operation facilities:
  - Abaco Islands: <https://maps.mapaction.org/dataset/bhs-2019-09-ma047-v2>
  - Grand Bahama Island: <https://maps.mapaction.org/event/bhs-2019-09>
- Map showing maximum extent of potential impacts to human health deriving from mapped hazardous operation facilities:
  - Abaco Islands: <https://maps.mapaction.org/dataset/bhs-2019-09-ma081-v2>
  - Grand Bahama Island: <https://maps.mapaction.org/event/bhs-2019-09>
- Map showing maximum extent of potential impacts in terms of soil contamination deriving from mapped hazardous operation facilities:
  - Abaco Islands: <https://maps.mapaction.org/dataset/bhs-2019-09-ma082-v2>
  - Grand Bahama Island: <https://maps.mapaction.org/event/bhs-2019-09>
- Map showing maximum extent of potential impacts in terms of water contamination deriving from mapped hazardous operation facilities:
  - Abaco Islands: <https://maps.mapaction.org/dataset/bhs-2019-09-ma083-v2>
  - Grand Bahama Island: <https://maps.mapaction.org/event/bhs-2019-09>
- Map showing the flood trace around Equinor's oil storage facility: [https://emergency.copernicus.eu/mapping/ems-product-component/EMSR385\\_AOI12\\_GRA\\_PRODUCT\\_r1\\_RTP01/3](https://emergency.copernicus.eu/mapping/ems-product-component/EMSR385_AOI12_GRA_PRODUCT_r1_RTP01/3)

## 4. Structure of the report

The report comprises three chapters to cover the work completed during the mission. This introductory chapter provides a summary of the overall activities and outputs of the mission. It is followed by two chapters outlining the support provided in Abaco and Grand Bahama respectively.

As such, the report can be appreciated in full as an overall compilation of findings and recommendations from the mission at the national scale, of which the individual chapters on Abaco and Grand Bahama form a core component.

The individual chapters on Abaco and Grand Bahama, however, can also be read as standalone reports offering insights into the work done in the corresponding geographic area only.

## References

### Rapid assessment of hazardous material risks

- Flash Environmental Assessment Tool (FEAT): <https://www.eecentre.org/resources/feat/>. The FEAT helps to identify existing or potential acute environmental impacts that pose risks for humans, human life-support functions and ecosystems, following sudden-onset natural disasters. FEAT focuses primarily on immediate and acute impacts arising from released hazardous chemicals.
- E-learning module on the FEAT: <https://www.eecentre.org/training/>

### Disaster waste management

- Disaster Waste Management Guidelines: <https://www.eecentre.org/resources/dwm/>
- E-learning module on the Disaster Waste Management Guidelines: <https://www.eecentre.org/training/>
- Guidance materials on asbestos management in emergency situations:
  - Case study after Cyclone Idai in Mozambique: <https://ehaconnect.org/?s=asbestos>
  - Asbestos in Emergencies, Brief Guide: [https://postconflict.unep.ch/humanitarianaction/documents/02\\_05-08.pdf](https://postconflict.unep.ch/humanitarianaction/documents/02_05-08.pdf)
  - Asbestos clean-up practices post-earthquake: <https://www.who.int/hac/crises/chn/asbestos/en/>
  - WHO page on asbestos: [https://www.who.int/ipcs/assessment/public\\_health/asbestos/en/](https://www.who.int/ipcs/assessment/public_health/asbestos/en/)
  - CDC fact sheet on asbestos: <https://www.cdc.gov/niosh/topics/asbestos/>

### **Other useful links**

Environmental Emergencies Centre, [www.eecentre.org](http://www.eecentre.org)

Environment and Humanitarian Action Connect, [www.ehaconnect.org](http://www.ehaconnect.org)



Rapid assessment of acute  
environmental risks after Hurricane  
Dorian on Abaco Islands

**Abaco, The Bahamas**  
**September 2019**



**JOINT  
ENVIRONMENT  
UNIT**



*Published in Switzerland, 2019 by the UNEP/OCHA Joint Environment Unit, Response Support Branch, OCHA*  
*Copyright © 2019 UNEP/OCHA Joint Environment Unit*

*This report is based on the information received and gathered during the mission and therefore cannot be seen as exhaustive, but can be considered as representative of the existing situation. All information has been compiled by the experts on mission based upon best available knowledge when drafted.*

*This publication may be reproduced in whole or in part and in any form for educational or not-for-profit purposes without special permission from the copyright holder, provided acknowledgement is made of the source.*

*UNEP/OCHA Joint Environment Unit  
Response Support Branch, Office for the Coordination of Humanitarian Affairs (OCHA)  
Palais des Nations  
CH-1211 Geneva 10  
Switzerland  
ochaunep@un.org*

*Report Editor: Margherita Fanchiotti, UNEP/OCHA Joint Environment Unit  
Cover photo: Drone view of Marsh Harbour power sub-station (© UAS Dorian Relief)*

## Table of Contents

Executive summary	5
List of abbreviations, acronyms and glossary of terms	7
1. Mission background and scope	8
1.1 Context	9
1.2 Mission objective	10
2. Key activities and findings	11
2.1 Key activities	11
2.2 Key findings	13
3. Recommendations	16
Short-term	16
Medium-term	16
Long-term	16
4. Conclusions	17
References	17
Annexes	18

*The **UNEP/OCHA Joint Environment Unit (JEU)** responds as one UN to the environmental dimensions of emergencies. The Unit pairs UN Environment Programme's environmental expertise with the OCHA-coordinated humanitarian network. By coordinating international efforts and mobilizing partners, the JEU assists countries affected by disasters and crisis and works to enhance the environmental sustainability of humanitarian action. The JEU provides independent, impartial advice and practical solutions, while working with organizations dedicated to medium- and long-term rehabilitation to ensure a seamless transition from emergency response to recovery. The team manages the [EHA Connect digital tool](#), as well as the [Environmental Emergencies Centre](#).*

*The **United Nations Disaster Assessment and Coordination (UNDAC)** is part of the international emergency response system for sudden-onset emergencies. UNDAC is designed to help the United Nations and governments of disaster-affected countries during the first phase of a sudden-onset emergency.*



## Executive summary

On 1 September 2019, Hurricane Dorian made landfall as a Category 5 hurricane on Abaco Islands, The Bahamas, before moving over Grand Bahama Island, The Bahamas. As of 28 October, the official death toll stood at 67, expected to rise given that over 200 people were still missing. Abaco Islands were the most severely affected by the hurricane, which caused widespread devastation with thousands of houses with levelled, telecommunications towers down, and water wells and roads damaged. In Marsh Harbour, most of the infrastructure was damaged, with areas like The Mudd and The Pea left decimated.

Key environmental concerns in the aftermath of Dorian on Abaco Islands included the management of the large quantities of disaster waste generated by the hurricane and any potential secondary and cascading impacts resulting from damages to the numerous hazardous operation facilities located in Abaco.

To support the government-led response to Hurricane Dorian, a United Nations Disaster Assessment and Coordination (UNDAC) team was deployed to The Bahamas from 8 to 28 September. The team embedded an environmental expert from the UNEP/OCHA Joint Environment Unit (JEU). The expert was stationed in Abaco between 10 and 20 September and worked closely with local, national and regional authorities, as well as foreign military personnel and other humanitarian responders.

The main objective of the environmental mission to Abaco was to provide technical advice to local and national authorities to rapidly identify, assess and mitigate any negative environmental impacts following the event, with an emphasis on those that posed immediate life-threatening risks to humans (both local communities and responders); advise on required follow-up actions; promote the early integration of environmental considerations in assessments and overall response efforts; facilitate knowledge sharing and information exchange among national and international counterparts on environmental matters; and deliver recommendations accordingly.

The mission outcomes showed that special considerations on hazardous waste should be incorporated in a comprehensive disaster waste management strategy and any ongoing debris removal efforts should be linked to this strategy. Acute environmental risks on Abaco Islands deriving from some of the worst impacted hazardous operation facilities have been rapidly assessed and mitigated to the extent possible to prevent cascading negative humanitarian and environmental impacts, but timely follow-up by the operators at all sites of concern is required to restore safety.

The key recommendations from the mission are for the Government of The Bahamas to:

### *Short-term*

1. Follow-up with the operators at key sites of concern to ensure that safety is restored as a priority measure;
2. Incorporate special considerations on the handling and disposal of hazardous waste in the disaster waste management plan under development, including the identification of temporary disposal sites and reinstatement of management functions at Marsh Harbour landfill;
3. Ensure that any ongoing debris clearance or clean-up activities of any sort follow the provisions of the disaster waste management plan under development.

#### *Medium-term*

4. Develop an inventory of sites storing hazardous materials, including emergency contact details of the operators as well as details on the type of substance, quantities and distance to closest communities, water bodies, protected areas and other environmental attributes;
5. Develop hazard maps showing the impacts of natural and human-induced hazards, or a combination of both, on hazardous operation facilities.

#### *Long-term*

6. Integrate disaster waste management considerations in national and sub-national waste management as well as emergency management policies and plans, in preparation for future events.

## List of abbreviations, acronyms and glossary of terms

<b>BEST</b>	Bahamas Environment, Science and Technology
<b>BPL</b>	Bahamas Power and Light (Company Limited)
<b>CARPHA</b>	Caribbean Public Health Agency
<b>CDC</b>	Centers for Disease Control and Prevention
<b>CDEMA</b>	Caribbean Disaster Emergency Management Agency
<b>DEHS</b>	Department of Environmental Health Services
<b>ECHO</b>	European Commission's Directorate-General for Civil Protection and Humanitarian Aid
<b>FEAT</b>	Flash Environmental Assessment Tool
<b>IFRC</b>	International Federation of Red Cross and Red Crescent Societies
<b>IOM</b>	International Organization for Migration
<b>JEU</b>	UNEP/OCHA Joint Environment Unit
<b>MSB</b>	Swedish Civil Contingencies Agency
<b>NEMA</b>	National Emergency Management Agency
<b>NGO</b>	Non-Governmental Organization
<b>OCHA</b>	(UN) Office for the Coordination of Humanitarian Affairs
<b>PAHO</b>	Pan American Health Organization
<b>PMAC</b>	Port Managers Association of the Caribbean
<b>PPE</b>	Personal Protective Equipment
<b>RNAT</b>	Rapid Needs Assessment Team
<b>UCPM</b>	(European) Union Civil Protection Mechanism
<b>UN</b>	United Nations
<b>UNDAC</b>	United Nations Disaster Assessment and Coordination
<b>UNDP</b>	United Nations Development Programme
<b>UNEP</b>	United Nations Environment Programme
<b>WFP</b>	World Food Programme
<b>WHO</b>	World Health Organization

## 1. Mission background and scope

On 1 September 2019 at 12:45 PM EST, Hurricane Dorian made landfall as a Category 5 hurricane at Elbow Cay, Abaco Islands, The Bahamas, with wind speeds of 185 mph. Starting on 2 September at 2:00 PM EST, Dorian moved over Grand Bahama Island, The Bahamas. An all-clear was issued on 4 September.

As of 29 October, the official death count stood at 67, expected to rise given that over 200 people were still missing. The hurricane left a trail of devastation, with destroyed buildings, uprooted trees and significant disruptions to basic services. The Abaco Islands were the worst affected. Environmental concerns arose quickly in the aftermath of the event, notably in relation to disaster waste management as well as cascading negative impacts following damage to hazardous operation facilities.

The National Emergency Management Agency (NEMA) is in charge of overall emergency management and established an Emergency Operations Centre (EOC) in Nassau, with satellite EOC's on Abaco and Grand Bahama Islands led by the local government representation<sup>1</sup>. Coordination is channeled through a set of Emergency Support Functions (ESFs) representing key sectors. Among these, the Ministry of the Environment is leading work on environmental and hazmat risks under the related ESF.

To complement national efforts, two Regional Needs Assessment Teams (RNATs) led by the Caribbean Disaster Emergency Management Agency (CDEMA) were pre-positioned in Nassau as of 31 August. The teams consisted of 18 members from CDEMA Participating States, the Caribbean Public Health Agency (CARPHA), Global Affairs Canada, the Pan American Health Organization (PAHO), the Port Managers Association of the Caribbean (PMAC), the private sector, the World Food Programme (WFP) and the United Nations Office for the Coordination of Humanitarian Affairs (OCHA).

Surge staff from OCHA Regional Office as well as a United Nations Disaster Assessment and Coordination (UNDAC) team was subsequently dispatched in the immediate aftermath of the event to support the government-led response. The UNDAC team embedded an environmental expert from the United Nations Environment Programme (UNEP)/OCHA Joint Environment Unit (JEU) deployed to The Bahamas from 8 to 27 September to rapidly identify and advise on acute environmental risks.

The expert was stationed in Abaco between 10 and 20 September as the international partner lead for the environment/hazmat ESF, working closely with local, national and regional authorities, as well as foreign military personnel and other humanitarian responders to rapidly detect environmental risks and mitigate any negative impacts on human health, livelihoods and the environment. The environment/hazmat ESF did not have a designated government focal point in Abaco at the time of the mission, but this workstream was followed by the government representation in Abaco.

---

<sup>1</sup> MapAction. The Bahamas: Hurricane Dorian. Coordination sites.  
[https://maps.mapaction.org/dataset/13275a57-719b-4c7f-bebf-bd5d0858d3e6/resource/33a13f7a-bbbc-4e3a-8266-36d28e07d1f1/download/ma058\\_coordination\\_sites-300dpi.pdf](https://maps.mapaction.org/dataset/13275a57-719b-4c7f-bebf-bd5d0858d3e6/resource/33a13f7a-bbbc-4e3a-8266-36d28e07d1f1/download/ma058_coordination_sites-300dpi.pdf)

## 1.1 Context

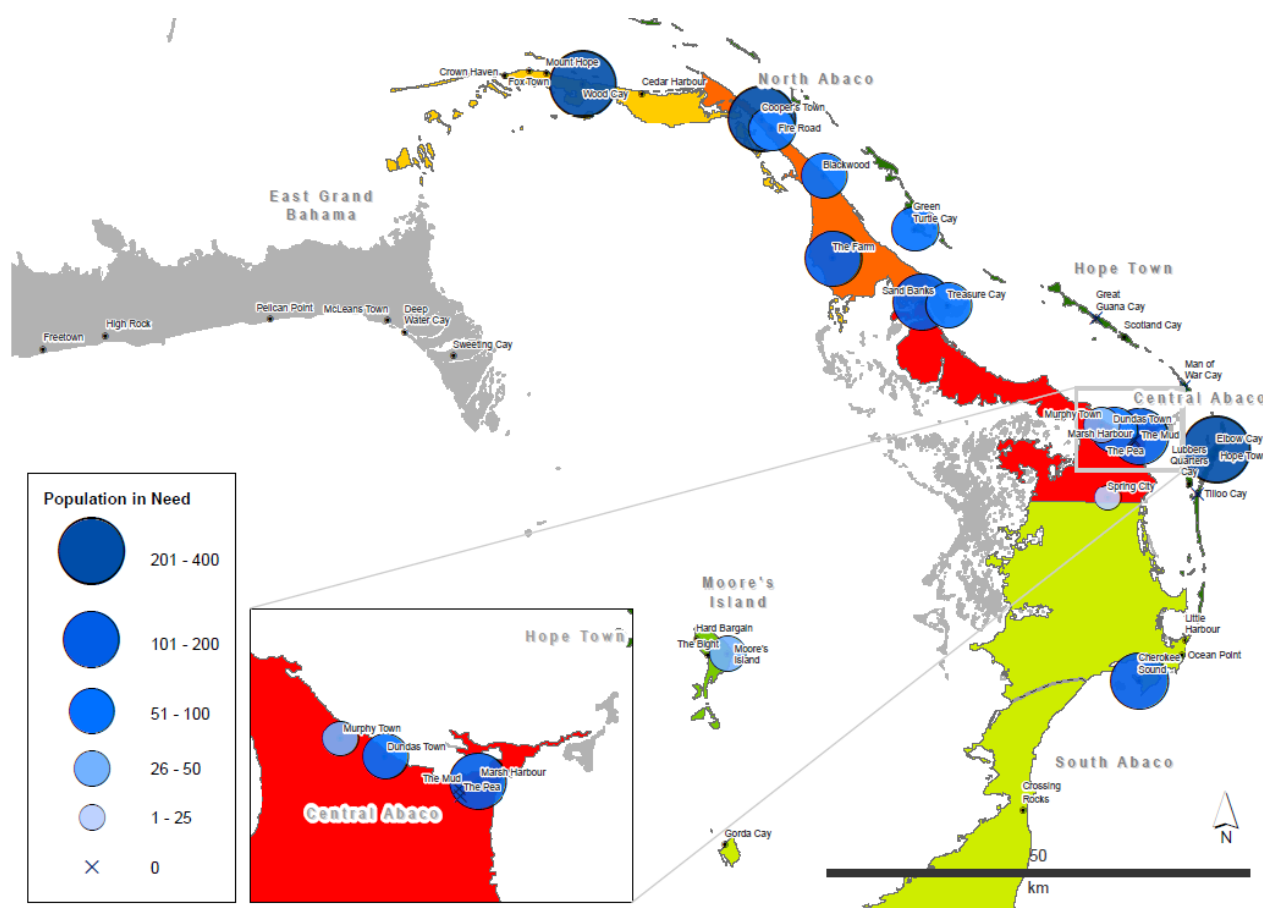


Figure 1: Needs assessment and analysis – Abaco. Source: MapAction (see Footnote 2)

The Abaco Islands were most severely impacted by Hurricane Dorian. Central Abaco, in particular, was the worst affected, with widespread devastation in the area between Treasure Cay and Marsh Harbour.

Many people left the island and cays in the aftermath of the hurricane. Based on consultations with NEMA representation in Abaco and local authorities, as well as on a consolidation of results from coordinated assessments conducted by the different humanitarian and military agencies on the ground, the UNDAC team estimated that 3,978 people were remaining on the island as of 19 September, of which 2,184 were in need of humanitarian assistance. The figures, agreed with the government representation in Abaco, were plotted on a map with support from MapAction, showing population clusters by their geographic distribution across the island and cays<sup>2</sup>. The map (Annex 4) also displays differential recovery status using different background colours, ranging from green in South Abaco (less impacted by the hurricane), to orange/yellow in North Abaco (early recovery status) and red in Central Abaco (in need of humanitarian assistance).

The population figures were varying significantly based on movements of people between Abaco, the shelters in Nassau and private arrangements. However, they can be seen as representative of the situation at the time. More people have been gradually returning as basic services have started to be restored.

<sup>2</sup> [https://maps.mapaction.org/dataset/eb1ee87c-d815-4fd0-b8bb-575d27907d42/resource/8262b500-b380-4b87-beef-6ad1805b8461/download/ma092\\_abaco\\_assessments\\_v2-300dpi.pdf](https://maps.mapaction.org/dataset/eb1ee87c-d815-4fd0-b8bb-575d27907d42/resource/8262b500-b380-4b87-beef-6ad1805b8461/download/ma092_abaco_assessments_v2-300dpi.pdf)

Environmental concerns were identified as one of the key priorities for action in the aftermath of Hurricane Dorian by the NEMA representation in Abaco to minimize any additional threats to the remaining population, their livelihoods and the surrounding environment.

The hurricane generated massive quantities of debris and rubble (Figure 2). Preliminary estimates from the United Nations Development Programme (UNDP) quantified a total of two million m<sup>3</sup> of waste produced by the hurricane in Abaco alone.



*Figure 2: drone view over some of the most affected areas in Marsh Harbour, showing the extent of devastation and accumulation of disaster waste (© Samaritan's Purse)*

In addition to destroyed houses and uplifted trees, Dorian also led to damaged industrial complexes, power plants, fuel and chemicals storage facilities, petrol stations and electrical grids, all of which could potentially leak toxic material in the wake of the storm and in the face of subsequent tropical storm alerts, threatening life and the environment.

Disaster waste hampered access to key humanitarian routes after the hurricane. While debris clearance was initiated in the immediate response phase to restore access, no considerations on waste segregation and handling hazardous materials were applied in practice in Abaco, posing challenges for post-disaster management. Cleared waste was brought to Marsh Harbour's landfill, where no management system was in place at the time of the mission.

Following these initial observations, the Ministry of the Environment through the Department of Environmental Health Services (DEHS) have since been working on the development of a disaster waste management plan to address all types of waste, moving beyond debris removal to systematically look at hazardous waste too. These efforts have been conducted jointly with the Ministry of Public Works, coordinating debris removal.

## **1.2 Mission objective**

The objective of the environmental mission to Abaco was to provide technical advice to local and national authorities to:



- Rapidly identify, assess and mitigate any negative environmental impacts following the event, with an emphasis on those that pose immediate life-threatening risks to humans (both local communities and responders);
- Advise on short-, medium- and long-term follow-up measures to address and mitigate those hazards;
- Promote the early consideration of environmental risks and any potential cascading impacts in disaster response coordination and assessments;
- Facilitate knowledge sharing and information management on environmental matters;
- Identify needs for additional specialized expertise and/or equipment as required.

The mission took place from 10 to 20 September 2019 as part of the UNDAC support to government-led response efforts in The Bahamas. It was conducted in close collaboration with relevant local, national and regional authorities, as well as foreign military personnel and other international emergency responders.

## **2. Key activities and findings**

### **2.1 Key activities**

After preliminary meetings with NEMA and the Ministry of the Environment in Nassau, the UNDAC environmental expert was dispatched to Abaco on 10 September as part of the UNDAC team based at the Abaco Local Support EOC in Marsh Harbour. Between 10 and 20 September, the expert coordinated support on environmental matters as the international sector lead for the environment/hazmat ESF, interfacing with government counterparts.

A rapid mapping exercise was conducted to identify the main facilities storing hazardous materials on the Abaco Islands that may have experienced damage, with consequent risk of additional environmental and humanitarian impacts from spilling. This was followed by a desktop rapid environmental assessment. Three types of buffer zones were drawn around each site of concern as concentric circles to show the maximum extent of potential impacts to i) human health; ii) water contamination; and iii) soil pollution. These distances were estimated based on the substances likely to be found at each facility (depending on the type of operations), their corresponding hazard classification and a rough estimation of likely quantities (derived from any indication of site storage capacities) or worst-case scenario. This analysis was done using the Flash Environmental Assessment Tool (FEAT)<sup>3</sup>, developed by the JEU to rapidly assess potential environmental and humanitarian risks as a result of the spilling of chemical substances.

A baseline desktop review of sites potentially storing hazardous materials, as well as an estimation of potential impacts on human health, livelihoods and the environment, had already been compiled for preparedness purposes prior to the hurricane and was made available by UNEP Regional Office for Latin America and the Caribbean. The baseline data were updated based on information gathered from the different humanitarian agencies and military forces supporting assessment efforts on the ground, as well as available satellite images.

Support was provided on needs assessment and analysis to understand key population figures and needs (remaining population, population in need and priority needs), but also to ensure early incorporation of environmental considerations in the coordinated assessment design and implementation process to rapidly identify any situation of concern. Coordinated assessments offered an opportunity to gather

---

<sup>3</sup> <https://www.eecentre.org/resources/feat/>



information from partners on any additional sites of concern and to get their support in surveying all mapped sites.

A preliminary UNDAC assessment trip was conducted on 11 September, during which the sites in North Abaco, between Treasure Cay and Cooper's Town<sup>4</sup>, were surveyed.

Further to reports of extensive damage and a fuel leak at the Bahamas Power and Light (BPL) power sub-station in Marsh Harbour, on 13 September, the UNDAC environmental expert visited the site jointly with the Royal Defence Force and in liaison with DEHS. Drone aerial assessment support was provided by UAS Dorian Relief. The facility sustained damage. A small, wind-spilled leak of diesel fuel affected the area within the plant. In addition, a substantial amount of fuel had flowed into the containment and was exposed to rain and wind, with a tropical storm forecast on the horizon. Contact was immediately established with BPL Abaco Operations Director during a joint visit to BPL main power generation plant in Abaco with the Royal Defence Force. The operator informed that they were aware of the situation. While they had pumping capacity, they had no storage capacity to be able to intervene. The government representation in Abaco as well as the Ministry of the Environment were alerted and kept informed about the situation. Collaboration was established with the operator and follow-up was sought with Fuel Relief Fund and the Dutch Military Forces as part of the European Combined Task Force for rapid intervention. The latter, which had hazmat qualified capacities, was subsequently tasked to inspect the tanks for any leaks and pump the fuel out of the containment ahead of the forecast tropical storm. Thanks to the rapid intervention, any further negative impacts were prevented.

In liaison with the authorities, the Dutch Military Forces were further tasked to survey all mapped hazardous operation facilities. Two assessment teams were pulled together, including hazmat qualified personnel. During a half-a-day training, the UNDAC environmental expert briefed all team members on the tasks, introduced them to the FEAT and trained them on the use of the flash site survey forms developed for this purpose (Annex 10). The teams began inspecting the sites jointly with the UNDAC environmental expert on 17 September. The site surveys were completed on 18 September.

The environmental mission in Abaco was completed on 20 September, when the UNDAC environmental expert moved to Grand Bahama. All environmental findings and key follow-up actions were discussed during a dedicated handover meeting with the NEMA representation in Abaco prior to departure. The Ministry of the Environment was regularly kept informed of all findings throughout the mission. The UNDAC team demobilized from Abaco on 22 September. A full OCHA/UNDAC debrief meeting with NEMA took place on 24 September in Nassau.

In summary, the following main environmental activities were completed during the mission to Abaco:

- Mapping of hazardous operation facilities on the Abaco Islands.
- Determination of maximum extent of potential adverse impact zones for human health, soil and water contamination.
- Rapid assessment of mapped hazardous operation facilities across the islands, with support from two assessment teams gathered by the Dutch Military Forces for the task.

---

<sup>4</sup> Up until the bridge that collapsed and impeded further access (until after its reopening ceremony following repair works by the Dutch Military Forces).

- Rapid intervention at sites of concern, in liaison with the operators and the Royal Defence Force, with support from a task team from the Dutch Military Forces.

## 2.2 Key findings

The main sites of concern storing hazardous materials on the Abaco Islands have been mapped with support from MapAction. The reference map is provided in Annex 5.

For each of the sites, buffer zones have been drawn as concentric circles showing the maximum extent of potential negative impacts in terms of:

- Human health (Annex 6)
- Water contamination (Annex 7)
- Soil contamination (Annex 8)

These can be compared and contrasted with the population figures provided in Annex 4 to get an idea of the exposed population among those remaining, noting that the latter figures will be constantly evolving and are likely to increase as the population will be gradually returning upon reestablishment of essential services.

The full, non-exhaustive list of the main hazardous operation facilities located on the Abaco Islands, along with the most common type of substance that could be found at each of them, its hazard classification and maximum distance at which it could be harmful to human health and the receiving environment (rivers, lakes and soil) is provided in Annex 9. This has been compiled using the FEAT.

Results from the rapid survey of the mapped sites show that, while most of the facilities sustained widespread damage, the following were flagged for priority follow-up:

- Marsh Harbour BPL power sub-station;
- Abaco Petroleum Company; and
- Abaco Gas.

Follow-up with the operators was sought in liaison with the government representation in Abaco.

### *Marsh Harbour BPL power sub-station*

The facility, which sustained substantial damage, hosts three diesel storage tanks. As informed by BPL, each tank has a maximum capacity of 140,000 gallons. The tanks are closed on top.

At the time of the site survey, on 13 September, a significant amount of fuel was found in the containment surrounding the tanks. This could have been caused either by continuous flow from the tank valves that may have been left open by fuel looters in the aftermath of the hurricane (when fuel was unavailable and a key priority) or by actual damage to the tanks/pipeline.



*Figure 3: drone view of BPL Marsh Harbour power sub-station, showing the three tanks, the amount of fuel in the containment and the wind spilled fuel leak (© UAS Dorian Relief)*

A small wind-blown diesel fuel leak occurred at the site. The fuel was spilled from the containment into the surrounding environment, within the plant's premises.

The remaining quantity of diesel fuel, likely mixed with water, in the containment posed a significant threat for further spilling given its exposure to wind and rain days ahead of a tropical storm forecast issued for 19-21 September. The facility is surrounded by forests.

The operator informed that they did not have the capacity to intervene, since they had pumps but no storage capacity, nor immediate capabilities for full inspection of the status of the tanks. Support was identified in the Dutch Military Forces, which had hazmat qualified personnel and the necessary equipment for rapid intervention. Pumping operations started, with rotational shifts put in place by the Dutch troops to ensure 24-hour coverage for fastest execution of the task. Pending full verification of any damage to the tanks/pipeline, fuel sludge was pumped into one of the tanks found to be uncompromised as a temporary measure ahead of the tropical storm forecast.



*Figures 4 (left) and 5 (right): Emergency pumping operations at Marsh Harbour power sub-station  
(©Christophe Illemassene, OCHA)*

The early identification of the issue; follow-up with the operator, the local NEMA representation, the Ministry of the Environment, the Royal Defence Force; and the rapid intervention with support from the Dutch Military Forces to inspect the site and pump the fuel out of the containment into a non-compromised tank, allowed for mitigation of risks and prevention of additional negative impacts.

However, further to the damages, the site was effectively accessible to anyone. At least one episode of fuel looting occurred during the interventions, showing the need to refence the area and instate a security guarding system to prevent further risks linked to uncontrolled and unsafe fuel handling. The operator was informed of the incident and suggested to follow-up.

BPL also informed that neither the main power generation plant nor the other sub-stations had experienced any damage, with the exceptions of two sub-stations in Treasure Cay and Sandy Point, where tanks storing sludge may have been leaking. The company was dealing with this at the time of the mission.

#### *Abaco Petroleum Company*

The facility experienced damage as a consequence of the hurricane, with wind-blown storage tanks and cylinders (Figure 3).

The operator informed that these were close to empty (below extraction levels) and that the site will be cleaned up upon insurance inspection. A site survey confirmed there were no signs of leaks, but safety should be restored as soon as possible.



## Abaco Gas

Several gas cylinders were blown away by the wind and spread across the site in unsafe conditions (Figure 7). Follow-up is required to restore safety at site.



*Figures 6 (left) and 7 (right): hurricane-impacted hazardous operation facilities in Abaco (Abaco Petroleum Company, left; Abaco Gas, right)*

### 3. Recommendations

The key recommendations from the mission are for the Government of The Bahamas to:

#### Short-term

1. Follow-up with the operators at key sites of concern to ensure that safety is restored as a priority measure;
2. Incorporate special considerations on the handling and disposal of hazardous waste in the disaster waste management plan under development, including the identification of temporary disposal sites and reinstatement of management functions at Marsh Harbour landfill;
3. Ensure that any ongoing debris clearance or clean-up activities of any sort follow the provisions of the disaster waste management plan under development.

#### Medium-term

4. Develop an inventory of sites storing hazardous materials, including emergency contact details of the operators as well as details on the type of substance, quantities and distance to closest communities, water bodies, protected areas and other environmental attributes;
5. Develop hazard maps showing the impacts of natural and human-induced hazards, or a combination of both, on hazardous operation facilities.

#### Long-term

6. Integrate disaster waste management considerations in national and sub-national waste management as well as emergency management policies and plans, in preparation for future events.

## 4. Conclusions

In conclusion, environmental concerns were identified as a key priority in the aftermath of Hurricane Dorian. The early integration of environmental considerations in emergency response helps in preventing additional cascading impacts on human wellbeing, livelihoods and the environment.

Findings from the mission showed that special considerations on hazardous waste should be incorporated in a comprehensive disaster waste management strategy and any ongoing debris removal efforts should be linked to this strategy. Acute environmental risks on Abaco Islands deriving from some of the worst impacted hazardous operation facilities have been rapidly assessed and mitigated to the extent possible to prevent cascading negative humanitarian and environmental impacts, but timely follow-up by the operators at all sites of concern is required to restore safety.

## References

### Rapid assessment of hazardous material risks

- Flash Environmental Assessment Tool (FEAT): <https://www.eecentre.org/resources/feat/>. The FEAT helps to identify existing or potential acute environmental impacts that pose risks for humans, human life-support functions and ecosystems, following sudden-onset natural disasters. FEAT focuses primarily on immediate and acute impacts arising from released hazardous chemicals.
- E-learning module on the FEAT: <https://www.eecentre.org/training/>

### Disaster waste management

- Disaster Waste Management Guidelines: <https://www.eecentre.org/resources/dwm/>
- E-learning module on the Disaster Waste Management Guidelines: <https://www.eecentre.org/training/>
- Guidance materials on asbestos management in emergency situations:
  - Case study after Cyclone Idai in Mozambique: <https://ehaconnect.org/?s=asbestos>
  - Asbestos in Emergencies, Brief Guide: [https://postconflict.unep.ch/humanitarianaction/documents/02\\_05-08.pdf](https://postconflict.unep.ch/humanitarianaction/documents/02_05-08.pdf)
  - Asbestos clean-up practices post-earthquake: <https://www.who.int/hac/crises/chn/asbestos/en/>
  - WHO page on asbestos: [https://www.who.int/ipcs/assessment/public\\_health/asbestos/en/](https://www.who.int/ipcs/assessment/public_health/asbestos/en/)
  - CDC fact sheet on asbestos: <https://www.cdc.gov/niosh/topics/asbestos/>

### **Other useful links**

Environmental Emergencies Centre, [www.eecentre.org](http://www.eecentre.org)

Environment and Humanitarian Action Connect, [www.ehaconnect.org](http://www.ehaconnect.org)

## **Annexes**

Annex 1.	Terms of Reference
Annex 2.	Coordination structure
Annex 3.	List of consulted stakeholders
Annex 4.	Map of needs assessment and analysis results for Abaco
Annex 5.	Reference map of hazardous operation facilities in Abaco
Annex 6.	Map of buffer zone for human health
Annex 7.	Map of buffer zone for water contamination
Annex 8.	Map of buffer zone for soil contamination
Annex 9.	FEAT Impact Table
Annex 10.	Flash site survey form



## **GENERALIST ENVIRONMENTAL EXPERT**

### **2019 HURRICANE DORIAN, BAHAMAS**

#### **UN Environment/OCHA Joint Unit<sup>1</sup>**

*On 1<sup>st</sup> September at 12:45pm EST, Hurricane Dorian made landfall as a category 5 hurricane at Elbow Cay, Abaco Islands (population of 17,200). Starting from 2<sup>nd</sup> September, it moved over Grand Bahama (population of 51,000). An all-clear was issued on 4<sup>th</sup> September. Aerial footage of the affected areas shows widespread debris, with extensive damage to buildings, flooded roads, windswept trees and power lines. According to the International Federation of Red Cross and Red Crescent Societies (IFRC), there could be as many as 13,000 houses damaged or destroyed. Disaster waste threatens public health, hinders rescue operations, reconstruction and livelihoods recovery and impacts the environment. Other potential environmental impacts, closely associated with human impacts, include waterways and communities contaminated by chemicals and heavy metals. On 5<sup>th</sup> September, Equinor reported an oil leak of unknown quantity from their South Riding Point oil storage terminal, confirmed from aerial assessment. The company is in contact with national authorities and following up, pending access to the facility.*

*The National Emergency Management Agency (NEMA) is in charge of response. Two (2) inter-agency Rapid Needs Assessment Teams, led by the Caribbean Disaster Emergency Management Agency (CDEMA), were pre-positioned in Nassau as of 31<sup>st</sup> August. The teams include surge staff from the United Nations Office for the Coordination of Humanitarian Affairs (OCHA). Further to the all-clear issued on 4<sup>th</sup> September, the teams began rapid needs assessments in the affected areas.*

*To complement ongoing efforts on coordination and assessment, OCHA is mobilizing a United Nations Disaster Assessment and Coordination (UNDAC) team, including environmental expertise. The UN Environment/OCHA Joint Unit (JEU) is looking for a generalist environmental expert and a disaster waste management expert to be on standby for immediate deployment to the Bahamas as part of the UNDAC team.*

#### **Responsibilities**

Under the overall guidance of the UNDAC Team Leader, the environmental expert is expected to:

- Identify and assess environmental hazards and impacts following the event, with an emphasis on those that pose immediate life-threatening risks to humans (both local communities and responders);
- Identify short-, medium- and long-term follow-up measures to address and mitigate those hazards;
- Promote early consideration of environmental risks and any potential cascading impacts in disaster response, in coordination with national authorities and other disaster responders;
- Identify needs for additional expertise and/or equipment as appropriate.

#### **Expected Actions**

---

<sup>1</sup> For more information on the UN Environment/OCHA Joint Unit: <http://ochaonline.un.org/ochaunep>

- Gather, consolidate and analyze environmental assessment data and provide recommendations to national authorities and the UN Resident Coordinator to minimize and/or mitigate impacts and promote the integration of appropriate actions into the overall disaster response strategy – in coordination with national and local actors with access to environmental data and assessments;
- Participate in ongoing assessment design and implementation processes, promoting the integration of environmental considerations;
- Support liaison with national and international counterparts working on environmental issues, including disaster waste, natural resource management and chemical hazards – facilitating information exchange between the relevant actors;
- Communicate rapidly and regularly all findings to the UN Environment / OCHA Joint Unit, emphasizing the possible need for additional specialized expertise (e.g. related to oil/chemical contamination, natural resource management, etc.) and/or additional equipment as required;
- Identify, where applicable, pre-existing contributing environmental factors to the disasters (e.g. deforestation, poor urban planning, lack of prevention and preparedness in environmental sector);
- Provide a support function to the UNDAC team on environmental issues.

Note: Contact with media, including interviews, should only be undertaken in agreement with the UNDAC Team Leader and the UN Resident Coordinator.

### **Education and work experience**

- Background in environmental/natural sciences, environmental/civil engineering, chemistry, chemical/industrial engineering, disaster management, or related fields;
- Ability to integrate environmental considerations across disciplines and specifically into disaster response;
- Ability to distinguish immediate, medium-term and long-term priority actions;
- Familiarity with rapid environmental assessment tools and frameworks;
- Familiarity with the emergency response/humanitarian architecture;
- Ability to coordinate with international and national agencies involved in disaster response;
- Familiarity with management of operational support functions including telecommunications, logistics and basic field security;
- High motivation, coupled with an ability to improvise effectively in rapidly changing situations with minimal guidance and support;
- Team skills required for working in a multi-disciplinary, multi-national team in field conditions of hardship, with an ability to assume authority as and when needed;
- Availability for short-notice mobilization (within 48 hours) and to stay in the field for up to 3-4 weeks;
- Fluency in the English language;
- Knowledge of MS Windows and MS Office and ability to operate standard IT and communications equipment;
- Completed training course on Environment and Emergencies (of stand-by partner, UNDAC system, JEU response partner and/or other organization) is an asset;
- Availability for additional follow-up, collaboration and editing of mission report after the official mission deadline.

**ABACO - ESF (1-13)****Hurricane Dorian Coordination  
Structure**

as of 20 Sept 2019 by Abaco EOC

<b>Emergency Support Function</b>	<b>Role/area of coverage (suggested sector equivalent)</b>	<b>Bahamas lead agency and contact</b>	<b>Regional / international counterpart and contact</b>
ESF 1 - Transportation	Coordination of land, sea and air transportation services (Logistics)	RBDF	WFP - Giuseppe "Pepe" Linardi giuseppe.linardi@wfp.org
ESF 2 - Communications	Inter and intra-departmental communication (services and equipment) Family island communication	NOT SPECIFICALLY ASSIGNED	WFP - Angel Buitrago angel.buitrago@wfp.org
ESF 3 - Public Works and Transport	Civil Engineering / Utilities / Water and Sewage / Damage Assessment / Debris removal / Infrastructure and critical facilities / Road repair and maintenance (early recovery) / Rehabilitation / Wash	Water and Sewage / RBDF	Public Works liaison not present. <b>WASH</b> performed by Adrianus Vlugman +1-246-836-5496 . vlugmana@paho.org <b>Debris management</b> CORE Ann +1 (917) 655 4467
ESF 4 - International Assistance	Foreign affairs / International aid / Briefing of arriving international teams / Reception centers	N/A	N/A
ESF 5 - Planning, Information and Public Information	Information management (IM working group)	Jamie	N/A
ESF 6 - Mass care and Shelter Service	Social Services / Shelter management / (Shelter / CCCM)	NOT SPECIFICALLY ASSIGNED	IFRC - Interim - Betisa Egea (IFRC) surgeshelterco.bahamas@ifrc.org
ESF 7 - Relief Supplies and Distribution	Logistics / Relief supplies / Donation management (logistics, NFI)	NOT SPECIFICALLY ASSIGNED	WFP - Giuseppe "Pepe" Linardi giuseppe.linardi@wfp.org
ESF 8 - Health and Medical Services	National medical asset coordination and mgmt. / Public health / Medical care	NOT SPECIFICALLY ASSIGNED	PAHO - Adrianus Vlugman vlugmana@paho.org

ESF 9 - Search and Rescue (SAR)	SAR	Royal Bahamas Defense Force	Completed
ESF 10A – Hazardous Material Land (Department of Environmental Health)	Hazardous Material spillage / release	NOT SPECIFICALLY ASSIGNED	UNEP - Margherita Fanchiotti eoc.response.abaco@gmail.com
ESF 10B - Hazardous Materials Marine			
ESF 10C – Bioterrorism			
ESF 11 – Food	Design & execution of MOUs with wholesalers and retailers association for food procurement (food)	NOT SPECIFICALLY ASSIGNED	WFP - Elisabet Fadul elisabet.fadul@wfp.com
ESF 12 – Tourism		NOT SPECIFICALLY ASSIGNED	N/A
ESF 13 – Volunteers	This includes service clubs, organizations, religious organizations, private sector	NOT SPECIFICALLY ASSIGNED	N/A

## Expert on mission – Environment, Abaco

Name	Organization	Role
Margherita Fanchiotti	UNEP/OCHA Joint Environment Unit (JEU)	UNDAC environmental expert

## List of main stakeholders consulted – Environment, Abaco

Name	Organization	Role
Rochelle Newbold	BEST Commission, Ministry of the Environment	Director
Thomasina Wilson	DEHS, Ministry of the Environment	Deputy Director
Algernon Cargill	Ministry of Transport and Aviation	Coordinator
Jack Thompson	Government of The Bahamas	Permanent Secretary, Coordinator
Maxine Duncombe	Central Abaco Administration	Central Abaco Administrator
Frederik Brown	Royal Bahamas Defence Force	Commanding Officer
Donald Joe MacLellan	Bahamas Power and Light (BPL)	Director, Island Operations Abaco
Roland van den Akker	Dutch Military Forces	Civil-Military Cooperation Liaison Officer
Dennis Borst	Dutch Military Forces	Commanding Officer, assessment support
Gerard Guerin	European Union Civil Protection Mechanism (UCPM)	UCPM Liaison Officer
Ted Honcharik	Fuel Relief Fund	Founder and Chairman of the Board
Adrianus Vlugman	Pan American Health Organization (PAHO)	ESF 3 Abaco international lead for WASH
Ann Lee	CORE	ESF 3 Abaco international lead for disaster waste management
Ugo Blanco, Richard Kelly, Tim Walsh, Ana Fonseca	United Nations Development Programme (UNDP)	Disaster waste management
Urs Bloesch	Swiss Development Cooperation	Disaster waste management
Jan-Willem Wegdam, Joseph Ashmore	International Organization for Migration (IOM)	Disaster waste management

Peter Robinson, Alice Goudie, Leon Baruah, Tom Hughes	MapAction	Mapping
Dan Stothart, Camilla Piviali	UNEP Regional Office for Latin America and the Caribbean	Regional interface, FEAT support
Charlotta Benedek, Emilia Wahlstrom, Dawit Yared	UNEP/OCHA Joint Environment Unit (JEU)	Back-up support



The Bahamas: Hurricane Dorian

Needs assessment and analysis - Abaco. Symbols represent the number of people in need following assessments up to19th September 2019.



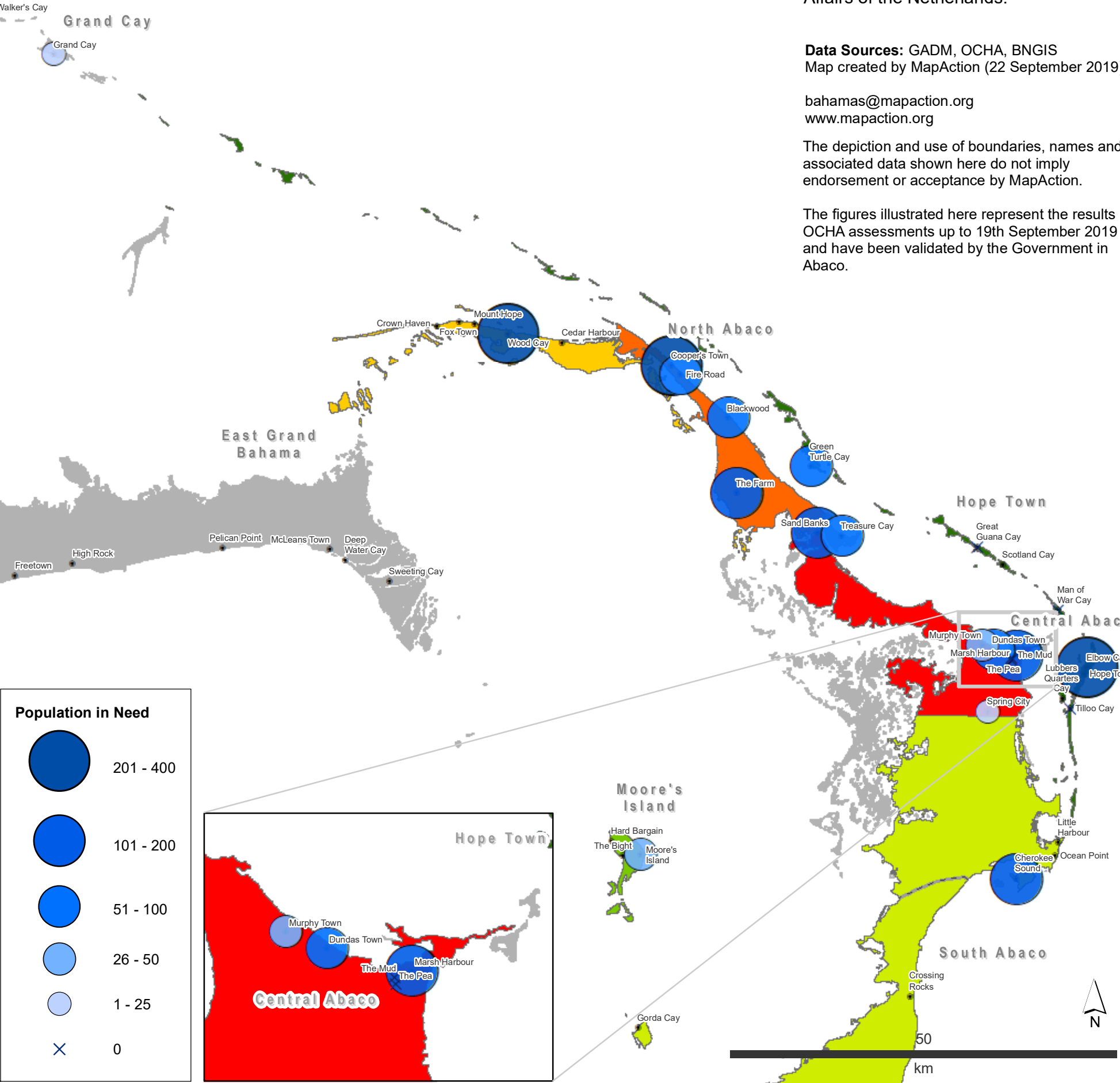
Supported by the German Federal Foreign Office and the Ministry of Foreign Affairs of the Netherlands.

Data Sources: GADM, OCHA, BNGIS  
Map created by MapAction (22 September 2019)

bahamas@mapaction.org  
www.mapaction.org

The depiction and use of boundaries, names and associated data shown here do not imply endorsement or acceptance by MapAction.

The figures illustrated here represent the results of OCHA assessments up to 19th September 2019 and have been validated by the Government in Abaco.



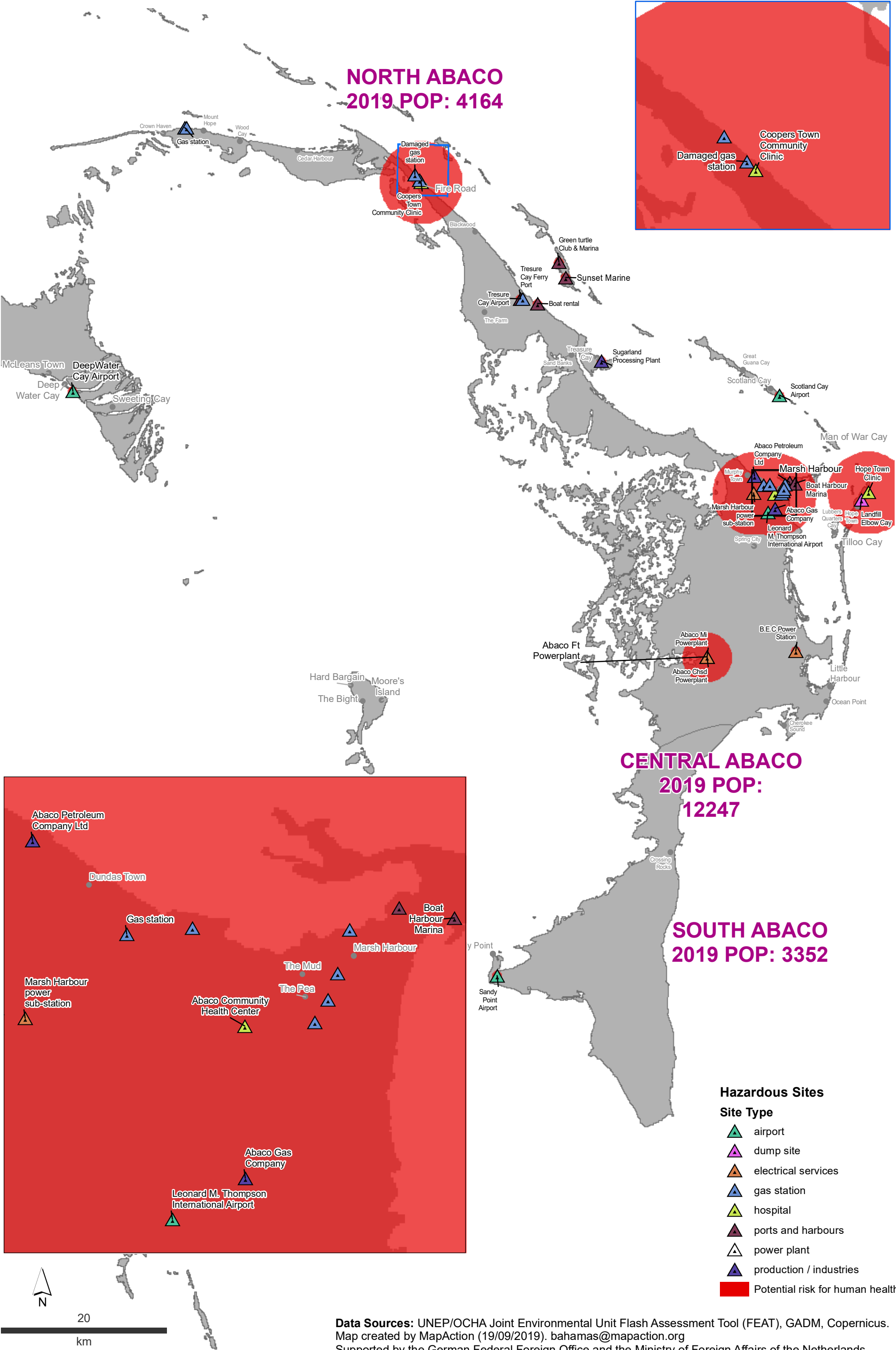
Location	Total Popn (2010)	Remaining Popn	Popn in need	Source	Priority needs	Ongoing response
Cedar Harbour, Wood Cay, Mount Hope, Fox Town, Crown Haven	762	700	400	Community member (came from north of bridge), Team Rubicon, Northern Administrator	Early recovery (houses/bridge repair, WASH, fuel, shelter	Bridge repair, WASH, generator, pump, shelter
Spanish Cay and all of Cooper's Town	676	450	300	Informed Elder, Northern Administrator	WASH, shelter, early recovery	Food, water, shelter, medical clinic repair (EMT - 10 clinicians total)
Hope Town / Elbow Cay	458	650	300	Deputy Counsellor/Hope Town Fire & Rescue	Shelter, food, WASH for displaced from other areas	Tarps
The Farm	402	250	200	Team Rubicon, SOS International	Shelter, WASH, food, fuel early recovery	Food, water, shelter
Sand Banks	333	150	150	OCHA, PAHO	WASH, food, shelter, fuel, early recovery	Food, water, shelter
Cherokee Sound, Little Harbour, Yellow Wood, Casuarinas Point	363	200	150		Early recovery, fuel	
Marsh Harbour	1874	150	135	Community members, WFP	WASH, food, shelter, fuel,early recovery	Food, water, shelter
Treasure Cay (without Sand Banks)	854	150	100	Airport manager, Deputy Chairperson, Police inspector, business owner	WASH, food, shelter, fuel, early recovery	Food, water, shelter, health
Grape Tree and all of Blackwood	396	100	100	Community members, WFP, Northern Admininstrator	Health, WASH,telecom, fuel, food, early recovery	Food, water
Green Turtle Cay	595	306	92	Boat rental owner in Treasure Cay, Northern Administrator	Shelter, WASH, food, early recovery	Food, water, shelter
Fire Road	349	245	74	Northern Administrator	WASH, shelter, early recovery	
Dundas Town	2890	75	68	WFP	WASH, food, shelter, fuel,early recovery	Food, water, shelter
Murphy Town	1938	50	45	WFP	WASH, food, shelter, fuel,early recovery	Food, water, shelter
Moore's Island	593	100	30	Medic Corps	Water, food, health, fuel	
Grand Cay	383	250	25	Northern Administrator	Early recovery, fuel, telecomms, power	
Spring City	500	42	15	Pastor / local leader	Power, water	Tarps, shingles
The Mudd	1612	0	0	Community members		
The Pea	882	0	0	Community members		
Parrots Cays, Lubbers Cay, Tilloo Cay, Cornish Cay and Bridges Cay	18	5	0		Early recovery, fuel, telecomms, power	
Man of War Cay	215	65	0		Early recovery, fuel, telecomms, power	
Great Guana Cay and Scotland Cay	127	40	0	Deputy Counsellor for Hope Town, Council Member for Guana Cay	Early recovery (repair houses, debris clearance), power	
Totals	8432	3978	2184			

Note: South Abaco locations have been excluded because it is reported they are not in need of humanitarian assistance

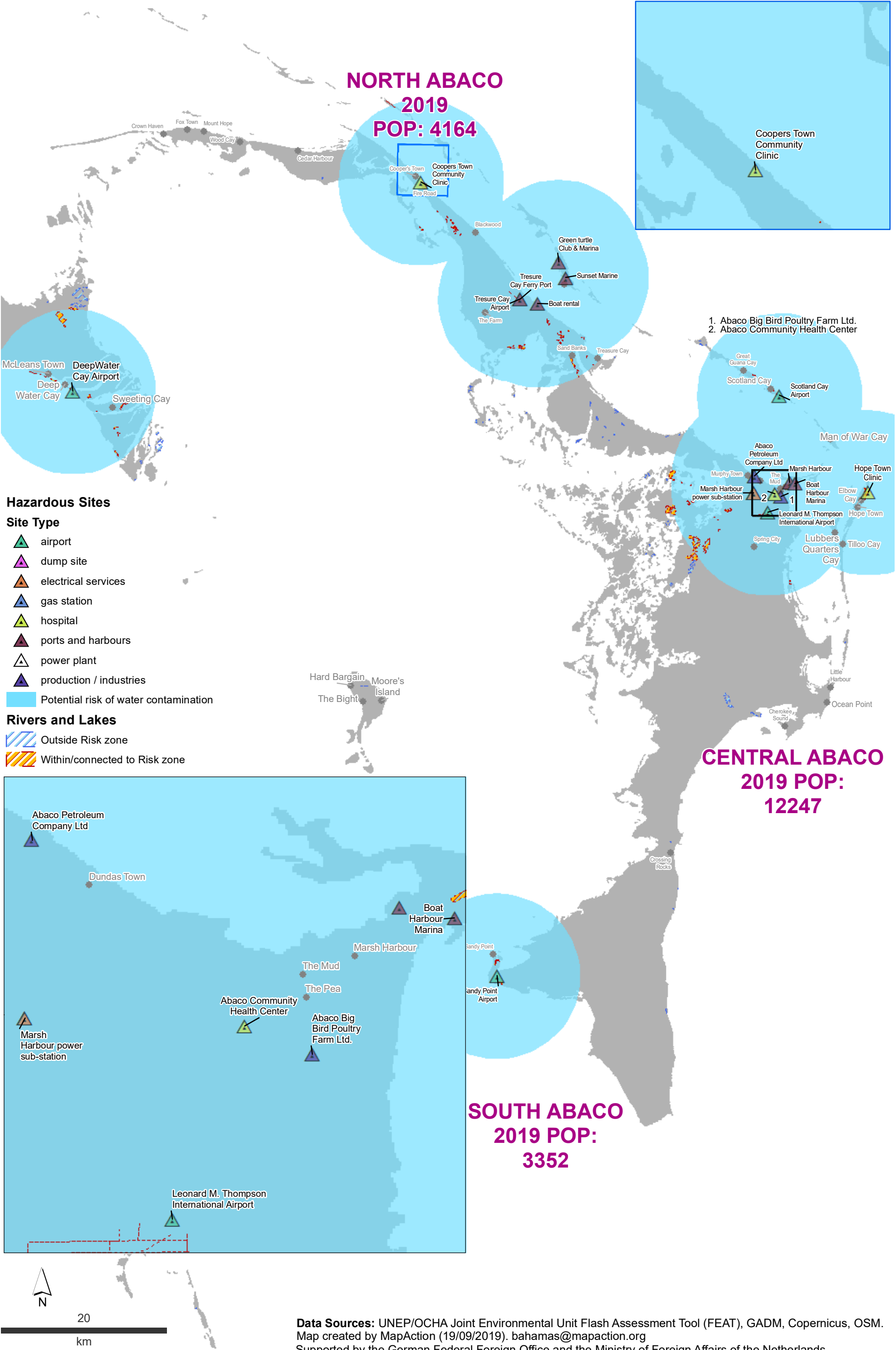
Hazardous sites, settlements, 2019 population at sub island level and damaged buildings (based on Copernicus imagery) for Abaco.



The Bahamas:  
Hazardous sites and hazardous areas for human health in Abaco.

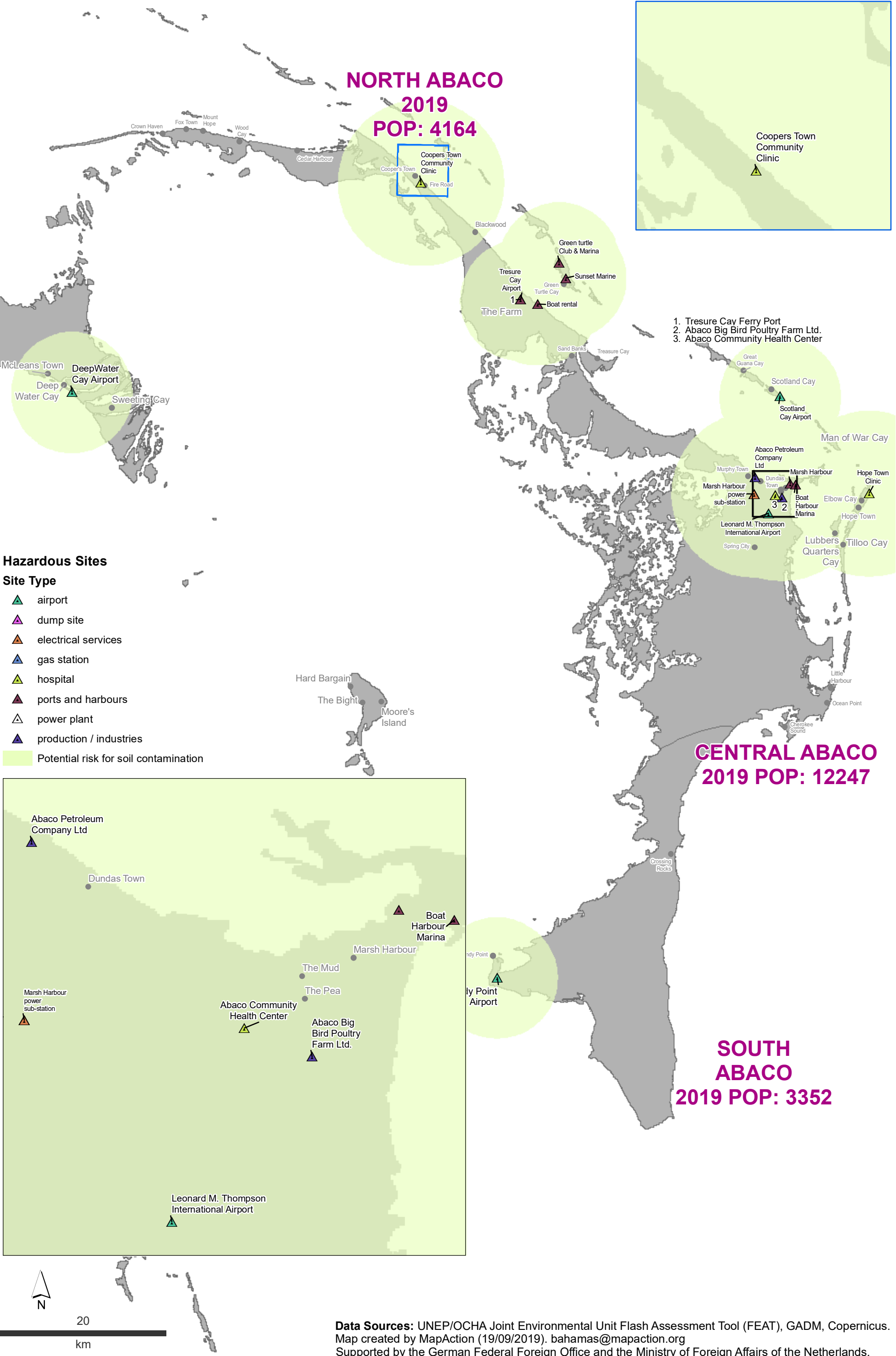


The Bahamas:  
Hazardous sites and hazardous areas for water in Abaco.





The Bahamas:  
Hazardous sites and hazardous areas for soil in Abaco.



# FEAT Impact Table

Site_Name	Latitude (decimal deg)	Longitude (decimal deg)	Substance	Hazard Classification - priority response	Physi cal State (gas, liquid, solid)	Quantity [kg]	Risk type (human / environment )	Impact Zone (m) Human Lethal	Impact Zone (m) Human Health	Impact Zone (m) Environment Soil	Impact Zone (m) Environment River
								enter number only if > 10km enter 999 (or some agreed value)	enter number only - if > 10km enter 999 (or some agreed value)	enter number only - if > 10km enter 999 (or some agreed value)	enter number only - if > 10km enter 999 (or some agreed value)
Name	Lat_dec	Long_dec	Substance	Haz_Class	Phys_Sta	Quant_kg	Risk_Type	IZ_H_Lethal	IZ_H_Health	IZ_EnvSoil	IZ_EnvRiver
Leonard M. Thompson International Airport	26.513669	-77.078017	Kerosene 8008-20-6	Flam. Liq. 3	Liquid	50000	Human	400	600	0	0
Leonard M. Thompson International Airport	26.513669	-77.078017	Kerosene 8008-20-6	Aquat. Chronic 2	Liquid	50000	Environment	0	0	7300	10000
West end Airport	26.687250	-78.980806	Kerosene 8008-20-6	Flam. Liq. 3	Liquid	50000	Human	400	600	0	0
West end Airport	26.687250	-78.980806	Kerosene 8008-20-6	Aquat. Chronic 2	Liquid	50000	Environment	0	0	7300	10000
Auxiliary Field	26.630500	-78.360000	Kerosene 8008-20-6	Flam. Liq. 3	Liquid	50000	Human	400	600	0	0
Auxiliary Field	26.630500	-78.360000	Kerosene 8008-20-6	Aquat. Chronic 2	Liquid	50000	Environment	0	0	7300	10000
DeepWater Cay Airport	26.630806	-77.921194	Kerosene 8008-20-6	Flam. Liq. 3	Liquid	50000	Human	400	600	0	0
DeepWater Cay Airport	26.630806	-77.921194	Kerosene 8008-20-6	Aquat. Chronic 2	Liquid	50000	Environment	0	0	7300	10000
International Airport Grand Bahama	26.548142	-78.696264	Kerosene 8008-20-6	Flam. Liq. 3	Liquid	50000	Human	400	600	0	0
International Airport Grand Bahama	26.548142	-78.696264	Kerosene 8008-20-6	Aquat. Chronic 2	Liquid	50000	Environment	0	0	7300	10000
Tresure Cay Airport	26.741109	-77.381737	Kerosene 8008-20-6	Flam. Liq. 3	Liquid	50000	Human	400	600	0	0
Tresure Cay Airport	26.741109	-77.381737	Kerosene 8008-20-6	Aquat. Chronic 2	Liquid	50000	Environment	0	0	7300	10000
Sandy Point Airport	26.004806	-77.395000	Kerosene 8008-20-6	Flam. Liq. 3	Liquid	50000	Human	400	600	0	0
Sandy Point Airport	26.004806	-77.395000	Kerosene 8008-20-6	Aquat. Chronic 2	Liquid	50000	Environment	0	0	7300	10000
Scotland Cay Airport	26.641181	-77.066408	Kerosene 8008-20-6	Flam. Liq. 3	Liquid	50000	Human	400	600	0	0
Scotland Cay Airport	26.641181	-77.066408	Kerosene 8008-20-6	Aquat. Chronic 2	Liquid	50000	Environment	0	0	7300	10000
Marsh Harbour	26.546567	-77.052319	Petroleum	Flam. Liq. 1	Liquid	10000000	Human	400	600	0	0
Marsh Harbour	26.546567	-77.052319	Petroleum	Aquat. Chronic 2	Liquid	50000	Environment	0	0	7300	10000
Boat Harbour Marina	26.545581	-77.045869	Petroleum	Flam. Liq. 1	Liquid	10000000	Human	400	600	0	0
Boat Harbour Marina	26.545581	-77.045869	Petroleum	Aquat. Chronic 2	Liquid	50000	Environment	0	0	7300	10000
Green turtle Club & Marina	26.782092	-77.336139	Petroleum	Flam. Liq. 1	Liquid	10000000	Human	400	600	0	0
Green turtle Club & Marina	26.782092	-77.336139	Petroleum	Aquat. Chronic 2	Liquid	50000	Environment	0	0	7300	10000
Sunset Marine	26.765425	-77.327800	Petroleum	Flam. Liq. 1	Liquid	10000000	Human	400	600	0	0
Sunset Marine	26.765425	-77.327800	Petroleum	Aquat. Chronic 2	Liquid	50000	Environment	0	0	7300	10000
Freeport Container Port Limited	26.529600	-78.765700	Petroleum	Flam. Liq. 1	Liquid	10000000	Human	400	600	0	0
Freeport Container Port Limited	26.529600	-78.765700	Petroleum	Aquat. Chronic 2	Liquid	50000	Environment	0	0	7300	10000
Grand Bahama Yacht Club	26.518078	-78.638178	Petroleum	Flam. Liq. 1	Liquid	10000000	Human	400	600	0	0
Grand Bahama Yacht Club	26.518078	-78.638178	Petroleum	Aquat. Chronic 2	Liquid	50000	Environment	0	0	7300	10000
Freeport Ship Services	26.516583	-78.747806	Petroleum	Flam. Liq. 1	Liquid	10000000	Human	400	600	0	0



Freeport Ship Services	26.516583	-78.747806	Petroleum	Aquat. Chronic 2	Liquid	50000	Environment	0	0	7300	10000
Port Lucaya	26.513889	-78.642389	Petroleum	Flam. Liq. 1	Liquid	10000000	Human	400	600	0	0
Port Lucaya	26.513889	-78.642389	Petroleum	Aquat. Chronic 2	Liquid	50000	Environment	0	0	7300	10000
Tresure Cay Ferry Port	26.741109	-77.381737	Petroleum	Flam. Liq. 1	Liquid	10000000	Human	400	600	0	0
Tresure Cay Ferry Port	26.741109	-77.381737	Petroleum	Aquat. Chronic 2	Liquid	50000	Environment	0	0	7300	10000
Boat rental	26.736409	-77.361236	Petroleum	Flam. Liq. 1	Liquid	10000000	Human	400	600	0	0
Boat rental	26.736409	-77.361236	Petroleum	Aquat. Chronic 2	Liquid	50000	Environment	0	0	7300	10000
Abaco Petroleum Company Ltd	26.552961	-77.094994	Petroleum	Flam. Liq. 1	Liquid	10000000	Human	400	600	0	0
Abaco Petroleum Company Ltd	26.552961	-77.094994	Petroleum	Aquat. Chronic 2	Liquid	50000	Environment	0	0	7300	10000
Abaco Gas Company	26.518078	-77.069647	Natural Gas	Flam. Gas 1	Gas	1000000	Human	200	300	0	0
Sugarland Processing Plant	26.675398	-77.282536	Ethanol	Flam. Liq. 2	Liquid	10000000	Human	400	600	0	0
Abaco Big Bird Poultry Farm Ltd.	26.531119	-77.062108	Carbamate pesticide	Aquatic Acute 1	Solid	5000	Environment	0	0	10000	10000
Pine Ridge Landfill	26.564333	-78.665389	Benzene	Flam. Liq. 2	Liquid	10000000	Human	400	600	0	0
Landfill Elbow Cay	26.529028	-76.965167	Benzene	Flam. Liq. 2	Liquid	10000000	Human	400	600	0	0
Grand Bahama Powerplant	26.518558	-78.753997	Ammonia	Acute Tox. 2	Gas	1000000	Human	200	3000	0	0
Abaco Ft Powerplant	26.355364	-77.148747	Ammonia	Acute Tox. 2	Gas	1000000	Human	200	3000	0	0
Abaco Chsd Powerplant	26.355364	-77.148747	Ammonia	Acute Tox. 2	Gas	1000000	Human	200	3000	0	0
Abaco Mi Powerplant	26.355364	-77.148747	Ammonia	Acute Tox. 2	Gas	1000000	Human	200	3000	0	0
B.E.C Power Station	26.363331	-77.041703	Oil and solvents	Flam. Liq. 3	Liquid	10000000	Human	400	600	0	0
Substation	26.523083	-78.699083	Oil and solvents	Flam. Liq. 3	Liquid	10000000	Human	400	600	0	0
Substation	26.539861	-78.698000	Oil and solvents	Flam. Liq. 3	Liquid	10000000	Human	400	600	0	0
Substation	26.524833	-78.662333	Oil and solvents	Flam. Liq. 3	Liquid	10000000	Human	400	600	0	0
Substation	26.565944	-78.594222	Oil and solvents	Flam. Liq. 3	Liquid	10000000	Human	400	600	0	0
Rand Memorial Hospital	26.532097	-78.692828	Ethylene oxide 75-21-8	Carc. 1B	Gas	Any	Human/Enviro	5000	5000	10000	10000
Sunrise Medical Center	26.516764	-78.687206	Ethylene oxide 75-21-8	Carc. 1B	Gas	Any	Human/Enviro	5000	5000	10000	10000
Lucayan Medical Centre	26.523662	-78.661649	Ethylene oxide 75-21-8	Carc. 1B	Gas	Any	Human/Enviro	5000	5000	10000	10000
Hope Town Clinic	26.537338	-76.957006	Ethylene oxide 75-21-8	Carc. 1B	Gas	Any	Human/Enviro	5000	5000	10000	10000
Abaco Community Health Center	26.533944	-77.070000	Ethylene oxide 75-21-8	Carc. 1B	Gas	Any	Human/Enviro	5000	5000	10000	10000
Coopers Town Community Clinic	26.866147	-77.504989	Ethylene oxide 75-21-8	Carc. 1B	Gas	Any	Human/Enviro	5000	5000	10000	10000
Borco Oil Refinery	26.512617	-78.756122	Petroleum	Flam. Liq. 1	Liquid	10000000	Human	400	600	0	0
Borco Oil Refinery	26.512617	-78.756122	Petroleum	Aquat. Chronic 2	Liquid	50000	Environment	0	0	7300	10000
Freeport Aggregates	26.578722	-78.668833	Petroleum	Flam. Liq. 1	Liquid	10000000	Human	400	600	0	0
Freeport Aggregates	26.578722	-78.668833	Petroleum	Aquat. Chronic 2	Liquid	50000	Environment	0	0	7300	10000
Industrial site	26.595222	-78.546694	Petroleum	Flam. Liq. 1	Liquid	10000000	Human	400	600	0	0
Industrial site	26.595222	-78.546694	Petroleum	Aquat. Chronic 2	Liquid	50000	Environment	0	0	7300	10000
Freeport Oil Co LTD	26.516444	-78.765586	Petroleum	Flam. Liq. 1	Liquid	10000000	Human	400	600	0	0
Freeport Oil Co LTD	26.516444	-78.765586	Petroleum	Aquat. Chronic 2	Liquid	50000	Environment	0	0	7300	10000
South Riding Point oil storage facility	26.644856	-78.550000	Petroleum	Flam. Liq. 1	Liquid	10000000	Human	400	600	0	0
South Riding Point oil storage facility	26.644856	-78.550000	Petroleum	Aquat. Chronic 2	Liquid	50000	Environment	0	0	7300	10000
Bahamas Cement Co.	26.538372	-78.761308	natural gas	Flam. Gas 1	Gas	1000000	Human	200	300	0	0
Cemex Bahamas	26.540692	-78.770511	natural gas	Flam. Gas 1	Gas	1000000	Human	200	300	0	0
Gold Rock Corp.LTD	26.556954	-78.666921	natural gas	Flam. Gas 1	Gas	1000000	Human	200	300	0	0
Pestco Maintenance & Supply Ltd	26.537414	-78.701075	Carbamate pesticide	Aquatic Acute 1	Solid	5000	Environment	0	0	10000	10000
Bahamas Poultry Co LTD	26.566058	-78.645019	Carbamate pesticide	Aquatic Acute 1	Solid	5000	Environment	0	0	10000	10000
The Bahamian Brewery	26.523964	-78.737622	Ammonia	Acute Tox. 2	Gas	1000000	Human	200	3000	0	0
Polymers International Freeport Bahamas	26.519942	-78.745312	Acrylic acid	Skin Corr. 1A	Liquid	1000	Human/Enviro	0	0	1,300	2,000
Polymers International Freeport Bahamas	26.519942	-78.745312	Acrylic acid	Aquat. Chronic 2	Liquid	50000	Environment	0	0	7300	10000
PharmaChem Technologies	26.515275	-78.750618	Medicine	Repr. 1A	Mix	Any	Human/Enviro	5000	5000	10000	10000

PharmaChem Technologies	26.515275	-78.750618	Medicine	Aquat. Chronic 2	Mix	50000	Environment	0	0	7300	10000
Gas station	26.517611	-78.761056	Petroleum, LPG	Liq. Gas 1	Gas	1000000	Human	200	300	0	0
Gas station	26.517500	-78.733528	Petroleum, LPG	Liq. Gas 1	Gas	1000000	Human	200	300	0	0
Gas station	26.542722	-78.702361	Petroleum, LPG	Liq. Gas 1	Gas	1000000	Human	200	300	0	0
Gas station	26.539278	-78.694639	Petroleum, LPG	Liq. Gas 1	Gas	1000000	Human	200	300	0	0
Gas station	26.532778	-78.698250	Petroleum, LPG	Liq. Gas 1	Gas	1000000	Human	200	300	0	0
Gas station	26.532889	-78.697417	Petroleum, LPG	Liq. Gas 1	Gas	1000000	Human	200	300	0	0
Gas station	26.517444	-78.693083	Petroleum, LPG	Liq. Gas 1	Gas	1000000	Human	200	300	0	0
Gas station	26.516972	-78.679139	Petroleum, LPG	Liq. Gas 1	Gas	1000000	Human	200	300	0	0
Gas station	26.519333	-78.668333	Petroleum, LPG	Liq. Gas 1	Gas	1000000	Human	200	300	0	0
Gas station	26.516917	-78.637472	Petroleum, LPG	Liq. Gas 1	Gas	1000000	Human	200	300	0	0
Gas station	26.519611	-78.637750	Petroleum, LPG	Liq. Gas 1	Gas	1000000	Human	200	300	0	0
Gas station	26.536278	-78.636444	Petroleum, LPG	Liq. Gas 1	Gas	1000000	Human	200	300	0	0
Gas station	26.617472	-78.319694	Petroleum, LPG	Liq. Gas 1	Gas	1000000	Human	200	300	0	0
Gas station	26.520597	-78.747028	Petroleum, LPG	Liq. Gas 1	Gas	1000000	Human	200	300	0	0
Gas station	26.919944	-77.792861	Petroleum, LPG	Liq. Gas 1	Gas	1000000	Human	200	300	0	0
Gas station	26.919833	-77.790639	Petroleum, LPG	Liq. Gas 1	Gas	1000000	Human	200	300	0	0
Gas station	26.741083	-77.379333	Petroleum, LPG	Liq. Gas 1	Gas	1000000	Human	200	300	0	0
Gas station	26.544194	-77.058028	Petroleum, LPG	Liq. Gas 1	Gas	1000000	Human	200	300	0	0
Gas station	26.543361	-77.083861	Petroleum, LPG	Liq. Gas 1	Gas	1000000	Human	200	300	0	0
Gas station	26.544111	-77.076250	Petroleum, LPG	Liq. Gas 1	Gas	1000000	Human	200	300	0	0
Gas station	26.534472	-77.061889	Petroleum, LPG	Liq. Gas 1	Gas	1000000	Human	200	300	0	0
Gas station	26.536833	-77.060389	Petroleum, LPG	Liq. Gas 1	Gas	1000000	Human	200	300	0	0
Gas station	26.539611	-77.059333	Petroleum, LPG	Liq. Gas 1	Gas	1000000	Human	200	300	0	0
Industrial site	26.539889	-78.697778									
Industrial site	26.516389	-78.750556									
Damaged electricity pole	26.871682	-77.509848									
Damaged gas station	26.868258	-77.507056	Petroleum, LPG	Liq. Gas 1	Gas	1000000	Human	200	300	0	0
Damaged gas station	26.874288	-77.512584	Petroleum, LPG	Liq. Gas 1	Gas	1000000	Human	200	300	0	0
Damaged shoreline	26.873931	-77.512283								0	0
Marsh Harbour power sub-station	26.534416	-77.095492	Diesel	Asp. Tox. 1	Liquid	270000	Human	5000	5000	10000	10000
Marsh Harbour power sub-station	26.534416	-77.095492	Diesel	Aquatic Chronic	Liquid	270000	Environment	0	0	10000	10000
Marsh Harbour power sub-station	26.534416	-77.095492	Diesel	Aquatic Chronic 2	Liquid	270000	Environment	0	0	7300	10000

**2019 Hurricane Dorian, Bahamas  
Hazardous Operation Facilities  
Flash Site Survey**

Date:

GPS coordinates:

Accuracy:

Altitude:

Name of facility/site:

Choose type of facility:

- ☐ Agriculture and food production
- ☐ Chemicals production
- ☐ Forestry
- ☐ General manufacturing
- ☐ Infrastructure and transport
- ☐ Mining
- ☐ Pipelines
- ☐ Power
- ☐ Transport interfaces
- ☐ Small and medium enterprises
- ☐ Other: \_\_\_\_\_

Type of hazardous substance stored:

Quantity of above hazardous substance that is spilling or has the potential to spill, with unit of measure (please state if spill is occurring or potential):

List actual and potential receptors (e.g., soil, forest, river, lakes, nearby communities, etc.):

Description of observed and/or potential impacts:

Contact details of site manager or other resource people:

Please submit the form **along with a (georeferenced) photo** to [fanchiotti@un.org](mailto:fanchiotti@un.org)



# Hurricane Dorian's impact on oil storage facilities

**Grand Bahama, The Bahamas**  
**September 2019**



**JOINT  
ENVIRONMENT  
UNIT**



**UNION CIVIL PROTECTION MECHANISM**  
DIRECTORATE- GENERAL FOR EUROPEAN CIVIL  
PROTECTION AND HUMANITARIAN AID OPERATIONS  
(ECHO)



*Published in Switzerland, 2019 by the UNEP/OCHA Joint Environment Unit, Emergency Response Support Branch, OCHA*  
*Copyright © 2019 UNEP/OCHA Joint Environment Unit*

*This report is based on the information received and gathered during the mission and therefore cannot be seen as exhaustive, but can be considered as representative of the existing situation. All information has been compiled by the experts on mission based upon best available knowledge when drafted.*

*The views expressed in this report may not in any circumstances be regarded as stating an official position of the United Nations, the European Commission and/or the United States Coast Guard. Neither these institutions nor the authors can be held responsible for any damage or liability resulted from the usage of the present report.*

*This publication may be reproduced in whole or in part and in any form for educational or not-for-profit purposes without special permission from the copyright holder, provided acknowledgement is made of the source.*

*UNEP/OCHA Joint Environment Unit  
Emergency Response Support Branch, Office for the Coordination of Humanitarian Affairs (OCHA)  
Palais des Nations  
CH-1211 Geneva 10  
Switzerland  
ochaunep@un.org*

*Report Editor: Margherita Fanchiotti, UNEP/OCHA Joint Environment Unit  
Cover photo: Equinor's South Riding Point oil storage facility on Grand Bahama Island in the aftermath of 2019 Hurricane Dorian (© Margherita Fanchiotti, UNEP/OCHA Joint Environment Unit)*

## Table of Contents

Executive summary	5
List of abbreviations, acronyms and glossary of terms	7
1. Mission background and scope	8
1.1 Context	8
1.2 Mission objective	10
2. Key activities and findings	10
2.1 Key activities	10
2.2 Key findings	11
2.2.1 Dynamic of the event	11
2.2.2 Presence of oil at sea	12
2.2.3 Receiving environment	14
2.2.4 Clean-up and waste management	15
3. Recommendations	16
3.1 Waste management	17
Short-term	17
Medium-term	18
3.2 Management of future similar events (including spills at sea)	18
Short-term	19
Medium-term	20
Long-term	20
4. Conclusions	22
References	23
Annexes	24



*The **UNEP/OCHA Joint Environment Unit (JEU)** responds as one UN to the environmental dimensions of emergencies. The Unit pairs UN Environment’s environmental expertise with the OCHA-coordinated humanitarian network. By coordinating international efforts and mobilizing partners, the JEU assists countries affected by disasters and crisis and works to enhance the environmental sustainability of humanitarian action. The JEU provides independent, impartial advice and practical solutions, while working with organizations dedicated to medium- and long-term rehabilitation to ensure a seamless transition from emergency response to recovery. The team manages the [EHA Connect digital tool](#), as well as the [Environmental Emergencies Centre](#).*

*The **United Nations Disaster Assessment and Coordination (UNDAC)** is part of the international emergency response system for sudden-onset emergencies. UNDAC is designed to help the United Nations and governments of disaster-affected countries during the first phase of a sudden-onset emergency.*

*The **European Union Civil Protection Mechanism (UCPM)** aims to strengthen cooperation between the EU Member States and 6 Participating States in the field of civil protection, with a view to improving prevention, preparedness and response to disasters. When the scale of an emergency overwhelms the response capabilities of a country, it can request assistance via the Mechanism. Through the Mechanism, the European Commission plays a key role in coordinating the response to disasters in Europe and beyond and contributes to at least 75% of the transport and/or operational costs of deployments.*

## Executive summary

On 1 September 2019, Hurricane Dorian made landfall as a Category 5 hurricane on Abaco Islands, The Bahamas, before moving over Grand Bahama Island, The Bahamas. As of 29 October, the official death toll stood at 67, expected to rise given that over 200 people were still missing. The hurricane left a trail of devastation, with destroyed buildings, uprooted trees and significant disruption to basic services on both islands. An inland spill of crude oil, with approximate length and width of 7 and 3 miles respectively, occurred as a result of the hurricane's impact on Equinor's South Riding Point oil storage facility on Grand Bahama Island.

At the request of the Ministry of the Environment through the Bahamas Environment, Science and Technology (BEST) Commission, an environmental emergency response team was dispatched to Grand Bahama Island between 21 and 29 September as part of the United Nations Disaster Assessment and Coordination (UNDAC) support to the government-led response to Hurricane Dorian. The team comprised one representative from the BEST Commission, an environmental expert from the UNEP/OCHA Joint Environment Unit (JEU), two oil spill experts mobilized by the JEU through the European Union Civil Protection Mechanism (UCPM) and a UCPM liaison officer. The experts worked very closely with the United States Coast Guard (USCG) also deployed to the island.

The main objective of the mission was to provide technical advice to national authorities to understand the oil spill impacts, assess existing capacities, identify required follow-up actions and deliver recommendations on how to enhance emergency response efforts both for the current situation and any future events.

The mission outcomes showed that the inland spill contaminated the surface layer of soil and the vegetation in the area nearest to the facility, and vegetation only in the farthest areas. Yet, the nearby wetlands did not appear to have been contaminated at the time of the survey. The team concluded that there was no evidence of the presence of oil at sea. The incident highlighted the opportunity to strengthen existing capacities and enhance readiness for any similar events in the future.

Based on the findings of the mission, the following measures ought to be considered for implementation by the Government of The Bahamas:

### Clean-up and waste management

#### **Short-term**

1. Appointment of a dedicated National On-Scene Coordinator, who can remain on site, to monitor clean-up activities and waste management. The Coordinator should streamline constant communication with nearby communities to track the recovery process as accurately as possible. This should be formally delegated to an international/assisting agency if it cannot be staffed by the Government of The Bahamas (*Ministry of the Environment*).
2. Agreement between the operator and the Ministry of the Environment on the endpoints of the clean-up (how clean is clean enough?) (*Ministry of the Environment*).
3. Minimization of waste volumes, including by exploring opportunities for reusing and recycling of oiled soil and vegetation (e.g., for concrete and/or asphalt production) (*Ministry of the Environment*).

#### **Medium-term**

4. Reforestation and revegetation of the impacted area, taking into consideration the rehabilitation requirements (*Ministry of the Environment*).

#### Management of future similar events (including spills at sea)

##### **Short-term**

5. Periodic surveys of the contingency plans put in place by the operators of oil storage facilities in the country (*Ministry with responsibilities for the Port Department, in liaison with the Ministry of the Environment*).
6. Periodic surveys and maintenance of any government-owned clean-up resources, as well as periodic review of those that can be made available by pre-identified partners as outlined in The Bahamas National Oil Spill Contingency Plan (*Ministry of the Environment*).
7. Periodic training and simulation exercises with the involvement of all key national stakeholders and the private sector to be ready for any future similar event (*Ministry with responsibilities for the Port Department, in liaison with the National Emergency Management Agency, the Ministry of the Environment and any other relevant parties*).
8. Any use of dispersants should be closely monitored, given the relatively shallow nature of Bahamian waters (*Ministry with responsibilities for the Port Department*).

##### **Medium-term**

9. Risk assessment of harbours and sea lanes (*Ministry with responsibilities for the Port Department, in liaison with the Ministry of the Environment*).
10. Pre-identification of temporary disposal sites for waste generated by oil spill accidents (*Ministry of the Environment*).
11. Survey of any Vessels of Opportunity (i.e., vessels engaged in commercial activities that could be hired to support response efforts as needed, also promoting local economy) (*Ministry with responsibilities for the Port Department*).
12. Establish procedures that require polluters to advertise and adjudicate monetary claims to help other businesses and individuals impacted by the polluters' spills (*Ministry of the Environment*).
13. Implement public affairs planning requirements to include social media and open houses to keep the general public apprised on claims, the status of the clean-up, long term recovery/remediation efforts, etc. (*Ministry of the Environment*).
14. Establish procedures for assessing potential cultural resources at risk (e.g. Taino/Lucayan sites & artefacts) before specific clean-up techniques are implemented by the operator (*Ministry of the Environment*).

##### **Long-term**

15. Development of Standard Operating Procedures to implement The Bahamas National Oil Spill Contingency Plan, as well as of local and harbour plans (*Ministry with responsibilities for the Port Department*).
16. Include considerations on hazardous and noxious substances (HNS) incidents in The Bahamas National Oil Spill Contingency Plan and any related national environmental policies (*Ministry with responsibilities for the Port Department and Ministry of the Environment*).
17. Consider ratifying the HNS Protocol of the International Convention on Oil Pollution Preparedness, Response and Co-operation (OPRC) (*Ministry with responsibilities for the Port Department*).
18. Establish a program to ensure long-term financial remedy for damages to natural resources. (*Ministry of the Environment*).

## List of abbreviations, acronyms and glossary of terms

<b>BEST</b>	Bahamas Environment, Science and Technology
<b>CARPHA</b>	Caribbean Public Health Agency
<b>CCA</b>	The Clean Caribbean & Americas
<b>CDEMA</b>	Caribbean Disaster Emergency Management Agency
<b>DEHS</b>	Department of Environmental Health Support
<b>ECHO</b>	European Commission's Directorate-General for Civil Protection and Humanitarian Aid
<b>HNS</b>	Hazardous Noxious Substance
<b>IMDG</b>	International Maritime Dangerous Goods
<b>IMO</b>	International Maritime Organization
<b>IPIECA</b>	International Petroleum Industry Environmental Conservation Association
<b>ITOPF</b>	International Tanker Owners Pollution Federation Limited
<b>JEU</b>	UNEP/OCHA Joint Environment Unit
<b>MSB</b>	Swedish Civil Contingencies Agency
<b>NCP</b>	National Oil Spill Contingency Plan of the Commonwealth of The Bahamas
<b>NEMA</b>	National Emergency Management Agency
<b>NGO</b>	Non-Governmental Organization
<b>NOSCAT</b>	National Maritime Policy Steering Committee
<b>OCHA</b>	(UN) Office for the Coordination of Humanitarian Affairs
<b>OPRC</b>	Oil Pollution Preparedness and Response Code
<b>OSRL</b>	Oil Spill Response Limited
<b>PAHO</b>	Pan American Health Organization
<b>PMAC</b>	Port Managers Association of the Caribbean
<b>POSOW</b>	Preparedness for Oil-polluted Shoreline cleanup and Oiled Wildlife interventions
<b>PPE</b>	Personal Protective Equipment
<b>RNAT</b>	Rapid Needs Assessment Team
<b>UCPM</b>	(European) Union Civil Protection Mechanism
<b>UN</b>	United Nations
<b>UNDAC</b>	United Nations Disaster Assessment and Coordination
<b>UNDP</b>	United Nations Development Programme
<b>UNEP</b>	United Nations Environment Programme
<b>USCG</b>	United States Coast Guard
<b>WFP</b>	World Food Programme

## 1. Mission background and scope

On 1 September 2019 at 12:45 PM EST, Hurricane Dorian made landfall as a Category 5 hurricane at Elbow Cay, Abaco Islands, The Bahamas, with wind speeds of 185 mph. Starting on 2 September at 2:00 PM EST, Dorian moved over Grand Bahama Island, The Bahamas. An all-clear was issued on 4 September.

As of 29 October, the official death count stood at 67, expected to rise given that over 200 people were still missing. The hurricane left a trail of devastation, with destroyed buildings, uprooted trees and significant disruptions to basic services on both islands. Grand Bahama hosts two oil storage facilities: Equinor's South Riding Point, which was heavily impacted, and Buckeye Bahamas Hub, which reported no damage. An inland spill of crude oil, with approximate length and width of 7 and 3 miles respectively in the northeast direction, was reported as a result of Dorian's impact on Equinor's facility.

The National Emergency Management Agency (NEMA) is in charge of overall emergency management and established an Emergency Operations Centre (EOC) in Nassau, with satellite EOC's on Abaco and Grand Bahama Islands led by the local government representation<sup>1</sup>. Coordination is channeled through a set of Emergency Support Functions (ESFs) representing key sectors. Among these, the Ministry of the Environment is leading work on environmental and hazmat risks under the related ESF.

To complement national efforts, two Regional Needs Assessment Teams (RNATs) led by the Caribbean Disaster Emergency Management Agency (CDEMA) were pre-positioned in Nassau as of 31 August. The teams consisted of 18 members from CDEMA Participating States, the Caribbean Public Health Agency (CARPHA), Global Affairs Canada, the Pan American Health Organization (PAHO), the Port Managers Association of the Caribbean (PMAC), the private sector, the World Food Programme (WFP) and the United Nations Office for the Coordination of Humanitarian Affairs (OCHA).

Surge staff from OCHA Regional Office as well as a United Nations Disaster Assessment and Coordination (UNDAC) team was subsequently dispatched in the immediate aftermath of the event to support the government-led response. The UNDAC team embedded an environmental expert from the United Nations Environment Programme (UNEP)/OCHA Joint Environment Unit (JEU) deployed to The Bahamas from 8 to 27 September to rapidly identify and advise on acute environmental risks on Abaco and Grand Bahama Islands.

At the request of the Ministry of the Environment through the Bahamas Environment, Science and Technology (BEST) Commission, an environment team comprising one representative from the BEST Commission, the UNDAC environment lead, two oil spill experts mobilized by the JEU through the European Union Civil Protection Mechanism (UCPM) and a UCPM liaison officer was deployed to Grand Bahama Island between 21 and 29 September to provide technical advice on the environmental impacts of the oil spill, in close collaboration with local authorities and the United States Coast Guard.

### 1.1 Context

Hurricane Dorian severely impacted Equinor oil storage facility on Grand Bahama Island. Operations at the terminal were shut down on 31 August as a precautionary measure in view of the hurricane warning.

---

<sup>1</sup> MapAction. The Bahamas: Hurricane Dorian. Coordination sites.

[https://maps.mapaction.org/dataset/13275a57-719b-4c7f-bebf-bd5d0858d3e6/resource/33a13f7a-bbbc-4e3a-8266-36d28e07d1f1/download/ma058\\_coordination\\_sites-300dpi.pdf](https://maps.mapaction.org/dataset/13275a57-719b-4c7f-bebf-bd5d0858d3e6/resource/33a13f7a-bbbc-4e3a-8266-36d28e07d1f1/download/ma058_coordination_sites-300dpi.pdf)

On 5 September, Equinor reported<sup>2</sup> that the facility had sustained damage based on findings from preliminary aerial assessment. On the same day, the operator also informed that oil spill response resources had been mobilized.

An inland spill of crude oil in the North-East direction was confirmed and noticeable from photo evidence made available by PAHO after an aerial assessment conducted on 4 September further to the all-clear (Figures 1 and 2).



*Figures 1 (above) and 2 (below): Inland spill of crude oil from Equinor oil storage facility as of 4 September 2019 (© PAHO)*

Several unconfirmed reports of oil spills at sea were circulating on international media prior to the mission, with the operator maintaining that no oil was leaking from the terminal based on results of their assessments. In particular, an area with potential oil in open water was reportedly proven to be seaweed, while the suspected presence of oil in another location 70-80 km North-East of the facility did not appear to be linked to the spilling from the site, according to a statement issued by Equinor on 12 September<sup>3</sup>.

<sup>2</sup> <https://equinor.com/en/news/2019-09-05-bahamas.html>

<sup>3</sup> <https://www.equinor.com/en/news/2019-09-12-oil-spill-recovery-bahamas.html>



## **1.2 Mission objective**

The objective of the environmental mission to Grand Bahama in response to the Equinor oil spill was to:

- Conduct a scoping mission to understand oil spill impacts and advise on required follow-up actions (short-, medium- and long-term);
- Provide technical recommendations to the Government on proposed methodologies for developing response, clean-up, remediation and restoration plans to mitigate human health, wildlife and environmental impacts;
- Provide recommendations towards enhancing ongoing emergency response efforts and strengthening capacities as required;
- Identify any outstanding expertise or equipment needs to address any immediate risks and impacts to humans and the environment as necessary;
- Communicate rapidly and regularly all findings to national authorities, as well as the Joint Environment Unit, emphasizing the possible need for additional specialized expertise and/or additional equipment as required.

The mission took place from 21 to 29 September 2019 on Grand Bahama Island. It was conducted in close collaboration with relevant local, national and regional authorities, as well as other international emergency responders. The environment team was deployed as part of the UNDAC support to government-led response efforts in The Bahamas.

## **2. Key activities and findings**

### **2.1 Key activities**

On 23 September, the environment team met with the Minister of the Environment as well as with representatives from the BEST Commission and the Department of Environmental Health Support (DEHS) in Nassau. On the same day, the team participated as observers in a meeting between the Ministry of the Environment and Equinor. As a result of these meetings, the team was able to obtain a more detailed picture of the situation, of the interventions that were being carried out by the operator for clean-up and of the habitats that had suffered the greatest contamination.

From 24 September, the team moved to Grand Bahama, where liaison with the local coordination structure, including regional and other international responders (notably CDEMA and the United States Coast Guard) was ensured. In particular, the United States Coast Guard had been patrolling the area over the previous weeks and worked very closely with the team on the environmental findings.

The team visited the oil storage facility on two occasions: for a preliminary site survey on 24 September and for an aerial assessment by helicopter in collaboration with DEHS and the United States Coast Guard on 26 September. On both occasions, the team interacted extensively with representatives from the company.

Still on 26 September, the team visited Sanitation Services, the only landfill located on Grand Bahama Island and the proposed final destination for the soil contaminated by the spill. During the visit, the team interviewed the site manager.

To inform the mission findings, the team reviewed the national legislation on oil contamination (notably the National Oil Spill Contingency Plan of the Commonwealth of The Bahamas (NCP), The Bahamas National Requirements and the Bahamas National Maritime Policy), as well as the documentation made available by the operator to the Ministry of the Environment.

## 2.2 Key findings

The main findings of the mission are provided below and classified according to the following categories:

- Dynamic of the event;
- Presence of oil at sea;
- Receiving environment; and
- Clean-up and waste management.

### 2.2.1 Dynamic of the event

The operator reported that, out of the ten tanks at the oil storage facility, one was under repair and without the dome prior to the event, while five other domes were blown away by the hurricane. The passage of Dorian over Grand Bahama led to a wind spill of crude oil inland resulting from two of the five tanks which lost-their domes. These two tanks (tanks n.6 and n.10) were full at the time of occurrence, while the others were empty.

As a result, crude oil was wind-spilled from the two full tanks along the hurricane's northeast direction, impacting mainly inland areas, with a length of about 7 miles and an approximate width of 3 miles. Plumes of oil sprayed over the nearby vegetation were already visible from the first aerial assessments conducted on 4 September after the all-clear was issued. Photo evidence also shows that the East side of the plant experienced flooding (Figure 3). The flood trace was mapped by the European Commission's Copernicus Emergency Management Service based on an analysis of satellite images (Annex 5). The spill contaminated both the surface layer of soil (estimated at 5 cm) and vegetation in the area nearest to the plant, and vegetation only in the farthest areas (Figure 4).



*Figure 3: Aerial assessment of the facility, showing the plume of oil along the northeast direction as well as flooding on the East side of the plant (© PAHO)*

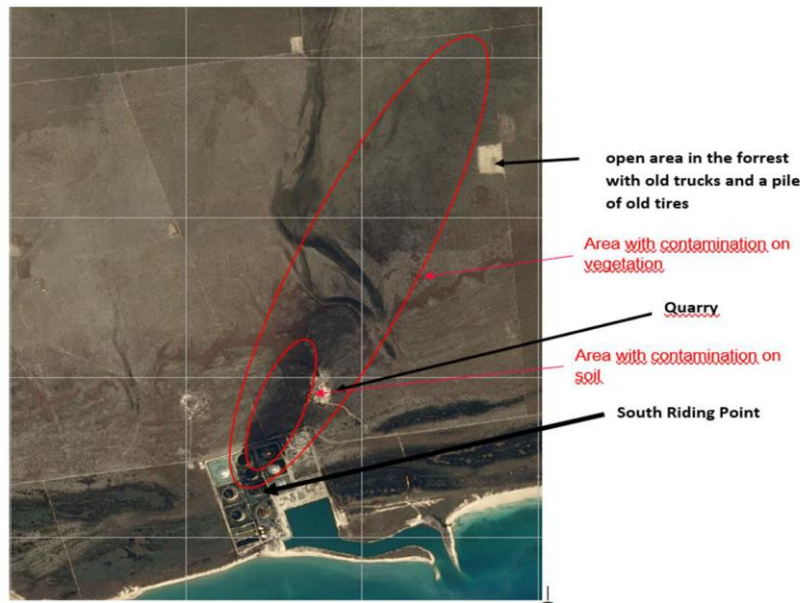


Figure 4: Extent of oil contamination inland (© Equinor)

The distinction between the impacted and non-impacted areas is very clear: a straight line could be drawn. This means that the blowing of the tank domes and consequent spilling of oil most likely occurred within a very short period of time (in the order of a few minutes), but with intense violence.

As informed by Equinor, the type of crude oil stored at the facility is DOBA. It must be noted that the DOBA crude oil has a relative density of 0.923 (at 15 °C), a viscosity of 290 cSt at 40 °C and a pour point of -6 °C (Annex 6). This means that the product is liquid at ambient temperature and has a medium density and viscosity. The product is therefore fluid even if it does not tend to penetrate the soil easily. It must, however, be considered that, over the time elapsed since its spill, it tends to undergo a weathering process that makes it more viscous and difficult to eliminate from contaminated surfaces.

Up until the completion of the mission, it was not possible for the operator to estimate the amount of crude oil that was spilled. The first estimates were disclosed on 9 October and subsequently revised downwards on 25 October<sup>4</sup>, from 119,000 to 55,000 barrels. Overall, the estimation of real quantities is challenging for the following reasons:

- The operator did not have a pre-event baseline record of quantities of oil in the impacted tanks;
- Temperature changes leading to volume changes make it challenging to estimate the amount that is left or that has been spilled;
- Storm water is likely to have entered the tanks and stratify under the crude oil, altering the real level of oil. When the pumps are operational again, crude oil can be transferred to the undamaged tanks and only then the actual quantity of crude oil that is left can be measured.

### 2.2.2 Presence of oil at sea

Two site surveys, as well as the observation of different aerial and satellite images made available by different sources, support the statement with reasonable certainty that there is no evidence of the presence of crude oil at sea originating from Equinor's South Riding Point oil storage facility. Results from a site survey and aerial assessment conducted by the team between 24 and 26 September also did not

<sup>4</sup> <https://www.equinor.com/en/where-we-are/bahamas.html>

reveal the presence of crude oil along the coast and in the wetlands surrounding the facility (Figures 5, 6 and 7). Limited amounts of crude oil may, however, have reached the north coast of the island due to the runoff of oil caused by inland flooding.



*Figures 6 (left) and 7 (right): Site survey along the beach near the facility on 24 September, which showed no evidence of oil that could have been spilled at sea. Little droplets of oil were found on the beach due to the vortex created by the storm*



*Figure 8: Helicopter view of the shoreline to the East of the oil storage facility and of the surrounding wetlands that appeared free of crude oil*



*Figure 9: The containment basin around the tanks forms a closed system without drainage of rain water. This is confirmed by the presence of water and crude oil inside the basin*



Finally, among the many unconfirmed reports of oil at sea in the press which were not accompanied by factual information on their location, observation of oil along the east coast of Abaco was reported from aerial images. Overall, no vessel back-tracking was carried out to confirm the origin of any potential spill at sea. Should the presence of hydrocarbons in that location be confirmed, any findings would need to be supported by sampling to compare the oil found at sea with that stored in tanks n.6 and n.10 (fingerprinting). Given that no signs of contamination were found along the shoreline next to the facility, the origin of this spill - if confirmed - could be on Abaco Islands, close to the area where the patches were observed.

### 2.2.3 Receiving environment

The receiving environment is predominantly characterized by a forest of Caribbean Pines (*Pinus caribaea* var. *bahamensis*), also known as Yellow Pines, with Sabal palmetto (*Coccothrinax argenta*) dominating the ground flora.



Figure 10: Pineland contaminated by crude oil

According to the Bahamas National Trust<sup>5</sup>, other species which can be found in the Bahamian pine forest include *Bletia purpurea*, Pineyard Pink Orchid, *Andropogon glomeratus*, also known as Bushy Beard Grass, and *Pteridium aquilinum*, Southern Bracken Fern. Shrubs which populate the area include Wild guava (*Tetrazygia bicolor*), Five-finger or Chicken's foot (*Tabebuia bahamense*) and Snowberry (*Chiococca the alba*). The Scale leafed love vine (*Cassytha filiformis*) winds its way through understory and around Poisonwood (*Metopium toxiferum*).

Grand Bahama Island hosts three national protected areas: the Lucayan National Park, the Peterson Cay National Park and the Rand Nature Centre. All these areas are located at a significant distance from the location of the inland spill.

---

<sup>5</sup> <http://bnt.bs/wp-content/uploads/2016/03/pineforest-l.pdf>

Oil can easily be absorbed by the tree trunks, with risk of fire. For this reason, the Forestry Unit was involved in monitoring the response. Wildfires are common and several were observed along the roads at the time of the mission, while moving into the dry season.

In terms of fauna, the pine forest hosts several species of birds. At the time of the mission, only three birds had reportedly been impacted by the spill (cormorant, egret and catbird). A veterinary facility designated to host any affected wildlife had been identified.

The area experiences tidal waves of 3 to 5 feet. The water table is shallow. Agricultural farms and fishing areas are located near the facility to the east and south respectively.

#### **2.2.4 Clean-up and waste management**

Equinor has been carrying out clean-up operations since 8 September. Free oil is collected using 13 vacuum trucks and oil skimmers (Figures 10 and 11). As of 24 September, 6000 barrels of oil had been recovered and stored in pond n. 3, which has a total capacity of 12,000 m<sup>3</sup>. The pond was reportedly less than 1/3 full at the time of the mission.



*Figure 10 (left) and 11 (right): Collection of crude oil is carried out using vacuum trucks (left) and oil skimmers (right)*

The operator's waste management plan proposes the export of the oil sludge to the United States under the provisions of the Basel Convention for incineration, pending approval from the Ministry of the Environment. This will require an estimation of the quantities and typology of waste, as well as the agreement of the recipient party to accept the waste.

For contaminated soil, its removal had just started at the time of the mission (see Figures 12 and 13 below). According to the operator's waste management plan, the entire level of soil (10-15 cm) covering the limestone base - the latter reportedly not permeable to oil - is planned for removal through bulldozers. The estimated final volume of contaminated soil is 500-1,000 m<sup>3</sup> piled. This soil is temporarily stocked in a dedicated pit created at the facility, with the objective of pre-treating it on site before it is sent to its final destination. The proposed destination is the only landfill located on Grand Bahama Island (Sanitation Services), subject to authorization from the authorities.

The landfill is a private facility, reportedly licensed by the Grand Bahama Port Authority and audited by DEHS. The facility reportedly has a Special Waste Management Plan as described in Equinor's waste management plan, following United States regulation. As informed by the landfill site manager, they appear to have previous experience in managing this type of waste and already collaborate with Buckeye

Bahamas Hub, the other oil storage facility on Grand Bahama Island. The final destination of the oiled soil would be the landfill itself, to be used for the top cover. The staff at the landfill facility does not have any experience in reusing/recycling. At the time of the mission, the site manager was not able to provide information on the quantities that the landfill could receive and be capable of disposing, also due to the uncertainty over actual waste figures.



*Figure 12: Removal of contaminated soil with bulldozers*



*Figure 13: Oiled soil accumulation, removed with bulldozers*

It must be noted that no information was received on the treatment and amount of water that entered the damaged tanks during the hurricane, which could be of considerable volume.

### **3. Recommendations**

Key recommendations from the mission have been clustered around the following two main areas:

- Clean-up and waste management; and
- Management of future similar events (including spills at sea).



### 3.1 Clean-up and waste management

The key recommendations on the management of the waste generated as a direct consequence of the oil spill in terms of minimization, segregation and opportunities for reusing/recycling are provided below against their timeline.

Overall, any considerations relating to the management of the waste generated by the spill should be linked to a comprehensive hurricane disaster waste management plan, whose development is led by DEHS. The Disaster Waste Management Guidelines, jointly published by UNEP, OCHA and the Swedish Civil Contingencies Agency (MSB), provides comprehensive guidance on disaster waste management<sup>6</sup>.

Further advice can be drawn from the Oil Spill Waste Management Manual published by the Preparedness for Oil-polluted Shoreline cleanup and Oiled Wildlife interventions (POSOW)<sup>7</sup> and the Technical Information Paper on Disposal of Oil and Debris published by the International Limited (ITOPF)<sup>8</sup>.

#### Short-term

**Recommendation n. 1:** Appointment of a dedicated National On-Scene Coordinator, who can remain on site, to monitor clean-up activities and waste management. The Coordinator should streamline constant communication with nearby communities to track the recovery process as accurately as possible. This should be formally delegated to an international/assisting agency if it cannot be staffed by the Government of The Bahamas (*Ministry of the Environment*).

The team considers advisable that a representative of The Government of The Bahamas is appointed as the focal point to monitor and provide oversight on ongoing clean-up activities and waste management. An Emergency Committee, comprising different government agencies responsible for various aspects relating to clean-up and waste management could be established and led by the appointed focal point.

**Recommendation n. 2:** Agreement between the operator and the Ministry of the Environment on the endpoints of the clean-up (how clean is clean enough?) (*Ministry of the Environment*).

The Emergency Committee could work with the operator to establish the criteria to declare the end the emergency. These criteria will depend on factors such as future land use (e.g., reforestation) and the possibility that oil residues could reach the water table, among others. An optimal balance between the need for clean-up and the minimization of waste generation should be found.

**Recommendation n. 3:** Minimization of waste volumes, including by exploring opportunities for reusing and recycling of oiled soil and vegetation (e.g., for concrete and/or asphalt production) (*Ministry of the Environment*).

This will require:

- An evaluation of the real oil sludge volumes. The volumes calculated so far might be lower than those that will have to be dealt with at the end of the operations; this is because overall quantities were still unknown at the time of the mission and the quantity of storm water that entered the damaged tanks

<sup>6</sup> <https://www.unocha.org/sites/dms/Documents/DWMG.pdf>

<sup>7</sup> <http://www.posow.org/documentation/wasteweb.pdf>

<sup>8</sup>

[https://www.itopf.org/fileadmin/data/Documents/TIPS%20TAPS/TIP\\_9\\_Disposal\\_of\\_Oil\\_and\\_Debris.pdf](https://www.itopf.org/fileadmin/data/Documents/TIPS%20TAPS/TIP_9_Disposal_of_Oil_and_Debris.pdf)

during the hurricane had not been estimated. Water would be stratified under the oil in the tanks given its higher density.

- An agreed approach on the minimal quantities of soil that should be removed to ensure a suitable level of clean-up while minimizing the generation of waste. At the time of the mission, oiled soil was being collected with the help of heavy equipment (predominantly, bulldozers) for a thickness of removed material of about 10-15 cm. The experts have observed that the soil is contaminated only up to the first 5 cm. It may be, therefore, advisable to use lighter equipment capable of removing only the surface layer. The process will be longer but the damage to the environment will be reduced; furthermore, if all the soil is removed, leaving the underlying limestone on the surface, the forest habitat may not be able to recover adequately.

- Exploring opportunities for reusing/recycling some of the waste materials generated by the spill. The feasibility of reusing some of the waste products as construction materials (concrete or asphalt) could be investigated. The team identified three construction companies located on the island and follow-up with them could be pursued to explore any possibilities in this regard. This will depend on existing capacities and on the features the material must have (e.g., grain size, chemical and mineral characteristics, etc.). In the case of asphalt, the soil could be used as the inert part to build asphalt roads. In the case of concrete, the soil could be used to produce cement (the so-called Alternative Raw Material - ARM), while oiled vegetation could possibly be used as fuel mass (the so-called Alternative Solid Fuel - ASF).

#### **Medium-term**

**Recommendation n. 4:** Reforestation and revegetation of the impacted area, taking into consideration the rehabilitation requirements (*Ministry of the Environment*).

It is advised that, at the end of the clean-up operations, a reforestation program of the pineland – alongside other plants that would bind and process potentially contaminated layers – is carried out under the coordination of the Ministry of the Environment (Forestry Unit), to help this specific habitat to recover from the damage suffered as a consequence of the spill. Moreover, communication with communities and the public on cleanup operations would remedy this process, and would improve the monitoring of reforestation efforts.

### **3.2 Management of future similar events (including spills at sea)**

The mission's key recommendations on how to strengthen management of any future similar events (including spills at sea) are provided below against their timeline, based on the gaps identified during the mission and the areas or items that would be convenient to revise, enhance or update.

Further advice can be drawn from ITOPF manual on Leadership, Command and Management of Oil Spills<sup>9</sup>, ITOPF manual on Contingency Planning for Marine Oil Spills<sup>10</sup>, Transport Canada's Emergency Response Guidebook<sup>11</sup>, and IPIECA's manual on Oil Spill Preparedness and Response<sup>12</sup>.

<sup>9</sup> <http://www.itopf.org/knowledge-resources/documents-guides/document/tip-10-leadership-command-management-of-oil-spills/>

<sup>10</sup> <http://www.itopf.org/knowledge-resources/documents-guides/document/tip-16-contingency-planning-for-marine-oil-spills/>

<sup>11</sup> <https://www.tc.gc.ca/eng/canutec/guide-menu-227.htm>

<sup>12</sup> <http://www.ipieca.org/resources/good-practice/oil-spill-preparedness-and-response-an-introduction/>

## Short-term

**Recommendation n. 5:** Periodic surveys of the contingency plans put in place by the operators of oil storage facilities in the country (*Ministry with responsibilities for the Port Department, in liaison with the Ministry of the Environment*).

The NCP requires that oil companies as well as companies located nearby or in any way related with maritime operations at ports have a contingency plan in place against maritime pollution. The team recommends that periodical surveys of these plans as well as the inspection of any documents or files associated with these plans (e.g., records of exercises, maintenance of equipment, training of the personnel involved in related tasks in addition to any other related matter) be conducted by the Port Authority, Harbour Master or any other related entity adequately trained for the purpose.

**Recommendation n. 6:** Periodic surveys and maintenance of any government-owned clean-up resources, as well as periodic review of those that can be made available by pre-identified partners as outlined in The Bahamas National Oil Spill Contingency Plan (*Ministry of the Environment*).

In the event of an incident, equipment and expertise may be provided by the Clean Caribbean & Americas (CCA), Oil Spill Response Limited (OSRL) from Southampton, United Kingdom, and the United States Coast Guard (in view of the agreements in place with the Royal Bahamas Defence Force). While available regional and international support is of great quality and professionalism, it is advisable to conduct periodic surveys and maintenance of any government-owned equipment, to enhance as required so as to reduce the time needed for mobilization and any other constraints linked to international assistance. Considerations should be made about the type of material, the compatibility between different brands, any auxiliary equipment that is required to operate core equipment, recovery capacities, the feasibility of deployment at short notice and the overall technical characteristics of the available resources.

**Recommendation n. 7:** Periodic training and simulation exercises with the involvement of all key national stakeholders and the private sector to be ready for any future similar event (*Ministry with responsibilities for the Port Department, in liaison with the National Emergency Management Agency, the Ministry of the Environment and any other relevant parties*).

Periodic testing of the NCP should be pursued through training and simulation exercises involving all relevant stakeholders. A mix of table-top and field exercises could be conducted on a regular basis to ensure an adequate level of preparedness. It is also recommended that a contact list of focal points of the different agencies that are part of the National Maritime Policy Steering Committee (NOSCAT) is maintained and periodically tested to ensure a rapid and efficient communication system is in place in the event of an emergency.

**Recommendation n. 8:** Any use of dispersants should be closely monitored, given the relatively shallow nature of Bahamian waters (*Ministry with responsibilities for the Port Department*).

Given the nature of Bahamian marine areas, it is recommended that any use of dispersants be closely monitored. A feasibility study on the use of dispersants could be conducted by specialists to inform any monitoring activities based on a proper survey of the local marine environment and its characteristics.

## Medium-term

**Recommendation n. 9:** Risk assessment of harbours and sea lanes (*Ministry with responsibilities for the Port Department, in liaison with the Ministry of the Environment*).

It is advisable to conduct a study of the maritime traffic bound for Bahamian ports and other related sea lanes in the Economic Exclusive Zone, to assess any risks related to maritime accidents. Furthermore, the NCP does not consider contamination in ports. Experience shows that this is where a considerable number of maritime accidents takes place. It is, therefore, recommended to carry out a risk assessment study of harbours, analyzing the characteristics of all ports, the size of the entrance channels and capacities to allocate some equipment in proximity to the ports to determine any capabilities to contain potential spills within the ports themselves (which is usually high in the event of Tier 1 or Tier 2 incidents) so as to reduce any environmental impacts associated with the spill, as well as the time of response and recovery costs.

**Recommendation n. 10:** Pre-identification of temporary disposal sites for waste generated by oil spill accidents (*Ministry of the Environment*).

In the event of a major spill at sea, a great quantity of waste could be generated. Experience from past events shows that up to sixty tons of waste of all types could be generated for one ton of oil spilled when the product reaches the shore side. It is, thus, advisable to act to minimize volumes as well as to pre-identify temporary disposal sites as part of the NCP.

**Recommendation n. 11:** Survey of any Vessels of Opportunity (i.e., vessels engaged in commercial activities that could be hired to support response efforts as needed, also promoting local economy) (*Ministry with responsibilities for the Port Department*).

In case of a major incident, the amount of equipment, vessels and trained personnel required to respond may be substantial. In view of this, it is recommended to make a survey of Vessels of Opportunity that could support clean-up efforts in the event of an emergency. This would typically include trawlers, fishing boats, harbour tugs, auxiliary ships for harbour operations and small oil tankers. Support from commercial vessels have proved its effectiveness in major incidents in the past, with the advantage that these would be managed and staffed by their own crew. The survey should record the vessel's main characteristics, capabilities and base port.

**Recommendation n. 12:** Establish procedures that require polluters to advertise and adjudicate monetary claims to help other businesses and individuals impacted by the polluters' spills (*Ministry of the Environment*).

Claim types could include: Removal Costs, Property Damage, Loss of Profits and Earning Capacity, Loss of Government Revenue, Cost of Increased Public Services and Subsistence Loss.

**Recommendation n. 13:** Implement public affairs planning requirements to include social media and open houses to keep the general public apprised on claims, the status of the clean-up, long term recovery/remediation efforts, etc. (*Ministry of the Environment*).

Effective external communication is essential for a successful response - even if the clean-up is tactically sound - to a significant pollution event. Public affairs play a key role during high-profile responses since they offer timely, accurate, and consistent information to the community on any threats to public health and the environment, as well as on the status of ongoing response efforts.

**Recommendation n. 14:** Establish procedures for assessing potential cultural resources at risk (e.g. Taino/Lucayan sites) before specific clean-up techniques are implemented by the operator (*Ministry of the Environment*).

Cultural resources include all artefacts, human remains, hunting and fishing grounds, sacred religious and ceremonial sites, cemeteries, and cave/rock art. Objectives for creating a culturally sensitive assessment process could include: inviting cultural reps/descendants to participate, meeting all governmental requirements regarding resource protection, avoiding irreparable harm to historic, cultural, or archaeological resources and establishing a functional group to address all cultural resource needs

#### Long-term

**Recommendation n. 15:** Development of Standard Operating Procedures to implement The Bahamas National Oil Spill Contingency Plan, as well as of local and harbour plans (*Ministry with responsibilities for the Port Department*).

The NCP has been redacted in line with best practices in the sector and refers to all the essential elements that the OPRC and other international references outline for a structured national contingency plan. However, it is recommended to develop standard operating procedures (SOPs) to implement the plan. The SOPs should be clear and concise, defining roles and responsibilities of every party to the plan. They should be tested in a simulation exercise before final endorsement and be strictly followed during emergencies. It is also recommended that the NCP is adapted to local and harbour contingency plans.

**Recommendation n. 16:** Include considerations on hazardous and noxious substances (HNS) incidents in The Bahamas National Oil Spill Contingency Plan and any related national environmental policies (*Ministry with responsibilities for the Port Department and Ministry of the Environment*).

As a matter of national policy, the incidents involving HNS are not comprised in the scope of the NCP. However, the transport by sea of these substances is rising, as evidenced in the International Maritime Dangerous Goods Code (IMDG). This leads to an increased generation of new, mixed products, which are increasingly dangerous from an environmental point of view. The risks associated with incidents involving these types of substances, combined with the risk of fire or explosion, point to the necessity of incorporating measures to cope with such accidents in the NCP.

**Recommendation n. 17:** Consider ratifying the HNS Protocol of the International Convention on Oil Pollution Preparedness, Response and Co-operation (OPRC) (*Ministry with responsibilities for the Port Department*).

The Government of The Bahamas is part of the OPRC, but not of the 2000 Protocol on Preparedness, Response and Co-operation to Pollution Incidents by Hazardous and Noxious Substances (commonly referred to as the HNS Protocol). The HNS Protocol addresses any occurrence or series of occurrences having the same origin, including fire or explosion, which result or may result in a discharge, release or

emission of HNS and which pose or may pose a threat to the marine environment, or to the coastline or related interests of one or more States, and which requires emergency action or immediate response. It is advisable to consider the ratification of this protocol.

**Recommendation n. 18:** Establish a program to ensure long-term financial remedy for damages to natural resources (*Ministry of the Environment*).

Natural resources include land, fish, wildlife, biota, air, water, ground water, drinking water supplies, and other such resources belonging to, managed by, held in trust by, appertaining to, or otherwise controlled by the Government of the Bahamas. Qualifying activities would include: assessments, restoration projects and compensation to the public for the lost use of the affected resource. Potential programs to model include the UK Premium guidelines (Pollution Response in Emergencies: Marine Impact Assessment and Monitoring), European Union GRACE Integrated Oil Spill Response Actions and Environmental Effects, and the U.S. National Oceanic and Atmospheric Administration's (NOAA) Natural Resource Damage Assessment (NRDA) program.

#### **4. Conclusions**

In conclusion, the mission found that ongoing efforts for the management of waste generated by the inland spill of crude oil should aim to minimize the quantities of waste produced while ensuring adequate clean-up. There appeared to be no evidence of the presence of oil at sea, nor of contamination of nearby wetlands.

While national legislation addressing oil contamination is in place, the incident showed the potential to strengthen national monitoring and oversight mechanisms and to develop standard operational procedures for the implementation of existing policies and plans so as to enhance readiness in the event of future similar incidents.

## References

**Transport Canada.** 2016. Emergency Response Guidebook.

**IPIECA.** 2019. Oil spill preparedness and response: An introduction.

**IPIECA.** 2018. Guidelines on implementing spill impact mitigation assessment (SIMA).

**POSOW** Manuals ([www.posow.org](http://www.posow.org))

- Oiled Shoreline Assessment
- Oiled Shoreline Cleanup
- Oil spill waste management
- Oiled Wildlife Response
- Fishermen's support in oil spill response

**ITOPF** Manuals ([www.itopf.com](http://www.itopf.com))

- ITOPF Handbook Manual
- Aerial observation of marine oil spills
- Use of dispersants to treat oil spills
- Recognition of oil on shorelines
- Clean-up of oil from shorelines
- Disposal of oil and debris
- Effects of oil pollution on the marine environment
- Leadership, command & management of oil spills
- Sampling and monitoring of marine oil spills
- Contingency planning for marine oil spills
- Response to Marine Chemical Incidents

## *Useful links*

Environmental Emergencies Centre, [www.eecentre.org](http://www.eecentre.org)

Environment and Humanitarian Action Connect, [www.ehaconnect.org](http://www.ehaconnect.org)

ITOPF, [www.itopf.com](http://www.itopf.com)

IMO, [www.imo.org](http://www.imo.org)

IPIECA, <http://www.ipieca.org/about-us/>

Transport Canada, <https://www.tc.gc.ca>

POSOW, [www.posow.org](http://www.posow.org)



## **Annexes**

Annex 1.	Request for assistance
Annex 2.	Terms of Reference
Annex 3.	Team composition
Annex 4.	List of consulted stakeholders
Annex 5.	Copernicus flood trace map
Annex 6.	Safety Data Sheet of DOBA crude oil



**THE BAHAMAS ENVIRONMENT, SCIENCE  
AND TECHNOLOGY COMMISSION**  
**Ministry of the Environment**

REF: MTE/BEST/

SENT VIA EMAIL

September 19, 2019

Ms. Margherita Fanchiotti  
United Nations Environment Programme

Dear Ms. Fanchiotti,

RE: REQUEST FOR TECHNICAL ASSISTANCE

Please note that assistance relative to an oil spill expert is requested from UNEP. It is understood that 1 week can be provided although 2 weeks would have been useful. We are also open to having two persons identified such that focus could be directed at multiple task given the timeline. Assistance in the following areas would be desired

- Perform a rapid environmental assessment of oil spill impacts and identify required follow-up actions (short-, medium- and long-term);
- Provide technical recommendations to the gov on the proposed methodologies for the clean up and restoration plans to mitigate human health, wildlife impacts and environmental impacts
- Provide recommendations towards enhancing ongoing emergency response efforts and strengthening capacities as required;
- Identify any outstanding expertise or equipment needs to address any immediate risks and impacts to humans and the environment as necessary;
- Communicate rapidly and regularly all findings to Ministry of Environment, as well as the Joint Environment Unit, emphasizing the possible need for additional specialized expertise and/or additional equipment as required.

Please advise if the identified needs above can be provided and inclusive of the agreed TOR. Additionally, please note that this request of assistance is done with the understanding that the assistance is offered at no cost to the GOB. Please advise

Sincerely,

Mrs. Rochelle W. Newbold  
Director  
The BEST Commission,  
Ministry of the Environment and Housing  
Ground Floor, Charlotte House  
Charlotte and Shirley Streets  
P.O. Box N-7132  
Nassau, The Bahamas

Cc: Janice Miller Permanent Secretary, Ministry of Environment and Housing

## **OIL SPILL EXPERTS 2019 HURRICANE DORIAN, BAHAMAS**

### **TERMS OF REFERENCE**

#### **UN Environment/OCHA Joint Unit<sup>1</sup>**

*On 1st September at 12:45pm EST, Hurricane Dorian made landfall as a category 5 hurricane at Elbow Cay, Abaco Islands (population of 17,200). Starting from 2nd September, it moved over Grand Bahama (population of 51,000). An all-clear was issued on 4th September. Dorian caused widespread damage across Abaco and Grand Bahama Islands. Grand Bahama hosts two oil storage facilities: Equinor's South Riding Point, which has been heavily impacted, and Buckeye Bahamas Hub.*

*The National Emergency Management Agency (NEMA) is in charge of response and has established an Emergency Operations Centre (EOC) in Nassau, with satellite EOC's on Abaco and Grand Bahama islands led by the local government representation. Coordination is channeled through a set of Emergency Support Functions (ESF) representing key sectors. The Department of Environmental Health Support (DEHS) is leading the hazmat ESF.*

*The United Nations Office for the Coordination of Humanitarian Affairs (OCHA) has surged a team to support the government-led response on coordination and assessments, including on environment. One staff from the UN Environment/OCHA Joint Unit is currently deployed.*

*To complement the ongoing response, the UN Environment/OCHA Joint Unit (JEU) is looking for two oil spill experts to provide technical advice to national and local authorities for identifying and assessing any environmental and human health risks and impacts resulting from Hurricane Dorian's effect on Grand Bahama island and its two oil storage facilities.*

#### **Responsibilities**

In liaison with national and local authorities and under the overall guidance of the UNDAC Team Leader and the UNDAC Environment Focal Point, the oil spill experts are expected to:

- Advise national and local authorities on any environmental and human health impacts and risks deriving from spilling at the two oil storage facilities located on the island;
- Provide technical advice to national authorities for responding to and recovering from ongoing spills, including by identifying priorities for action and supporting the development of response, clean-up, remediation and recovery plans to mitigate environmental damage;
- Identify any outstanding expertise or equipment needs to address any immediate risks and impacts.
- Provide advice, guidance and training to national and local authorities on the environmental assessment of oil spill impacts if requested and as required.

---

<sup>1</sup> For more information on the Joint Environment Unit: <http://ochaonline.un.org/ochaunep>

## **Expected Actions**

In close collaboration with relevant national and local authorities as well as international emergency responders:

- Conduct a scoping mission to understand oil spill impacts and advise on required follow-up actions (short-, medium- and long-term);
- Provide technical recommendations to the Government on proposed methodologies for developing response, clean-up, remediation and restoration plans to mitigate human health, wildlife and environmental impacts;
- Provide recommendations towards enhancing ongoing emergency response efforts and strengthening capacities as required;
- Identify any outstanding expertise or equipment needs to address any immediate risks and impacts to humans and the environment as necessary;
- Communicate rapidly and regularly all findings to national authorities, as well as the Joint Environment Unit, emphasizing the possible need for additional specialized expertise and/or additional equipment as required.

*Note: Contact with media, including interviews, should only be undertaken in agreement with the Government of The Bahamas and the UNDAC Team Leader.*

## **Education and work experience**

- Solid background in environmental management, chemical engineering or related field, with a focus on oil spill management.
- Ability to perform rapid environmental assessments and to distinguish immediate, medium-term and long-term priority actions;
- Familiarity with the emergency response/humanitarian architecture;
- Ability to coordinate with international and national agencies involved in disaster response;
- Familiarity with management of operational support functions including telecommunications, logistics and basic field security;
- High motivation, coupled with an ability to improvise effectively in rapidly changing situations with minimal guidance and support;
- Team skills required for working in a multi-disciplinary, multi-national team in field conditions of hardship, with an ability to assume authority as and when needed;
- Availability for short-notice mobilization (within 48 hours) and to stay in the field for up to 2 weeks;
- Fluency in the English language;
- Knowledge of MS Windows and MS Office and ability to operate standard IT and communications equipment;
- Availability for additional follow-up, collaboration and editing of mission report after the official mission deadline;
- Completed training course on Environment and Emergencies (of stand-by partner, UNDAC system, JEU response partner and/or other organization) is an asset.

## Team composition – Grand Bahama oil spill

Name	Organization	Role
Sydnei Cartwright	The Bahamas Environment, Science and Technology (BEST) Commission, Ministry of the Environment	National expert
Lushan Hannah	United States Coast Guard	Commanding Officer Pacific Strike Team, EOC Freeport Coordination
Margherita Fanchiotti	UNEP/OCHA Joint Environment Unit (JEU)	UNDAC environment lead
Esther El Haddad	European Commission Directorate-General for Civil Protection and Humanitarian Aid Operations	UCPM liaison officer
Luigi Alcaro	Italian Institute for Environmental Protection and Research (ISPRA)	Oil spill expert, mobilized by the JEU through the UCPM
Pablo Pedrosa	Spanish Ministry of Infrastructures and Transport, General Directorate of Merchant Marine	Oil spill expert, mobilized by the JEU through the UCPM

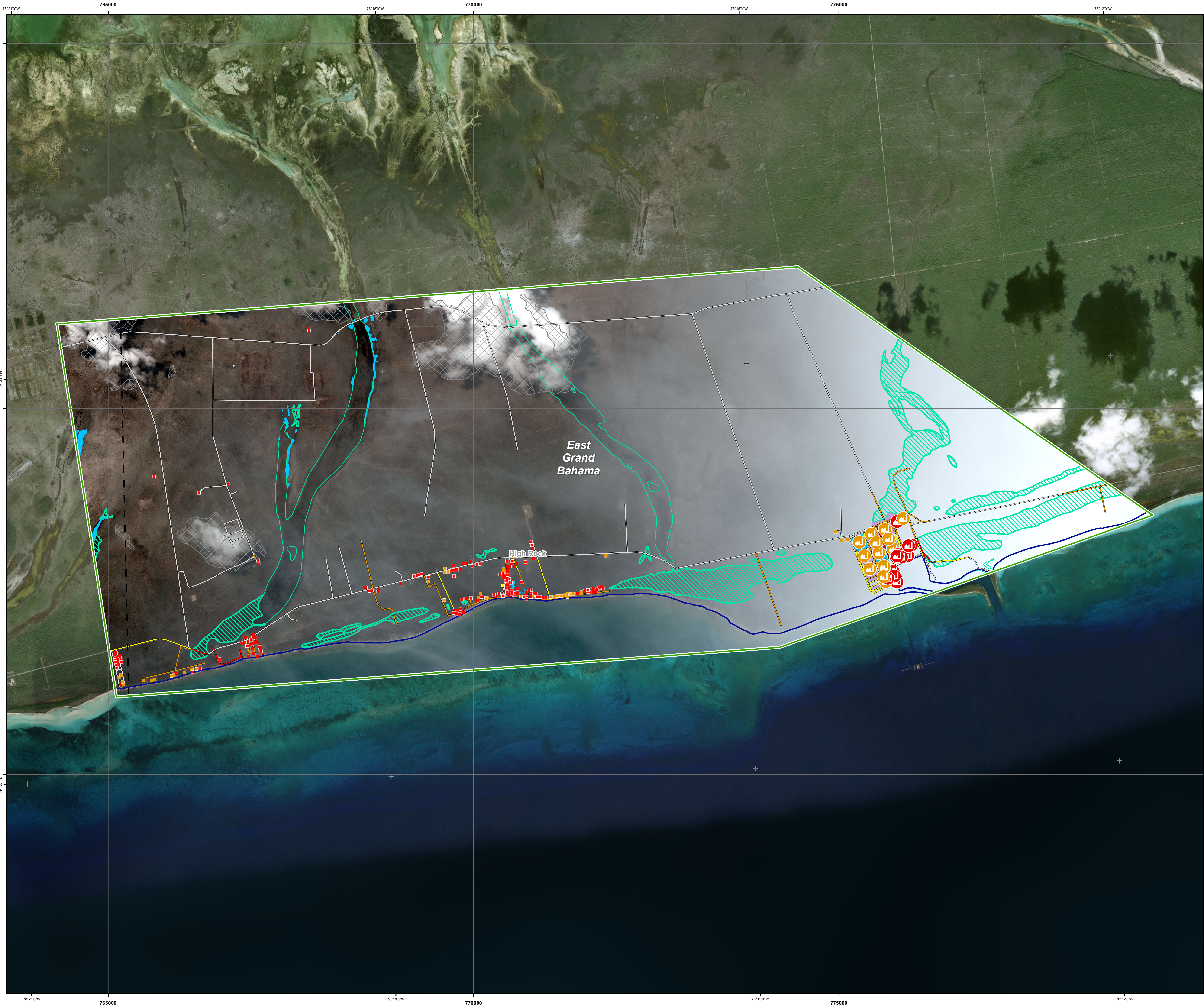
## List of main stakeholders consulted – Grand Bahama oil spill

Name	Organization	Role
Romauld Ferreira	Ministry of the Environment and Housing	Minister of the Environment
Janice Miller	Ministry of the Environment and Housing	Permanent Secretary
Rochelle Newbold	BEST Commission, Ministry of the Environment	Director
Melony McKenzie	DEHS, Ministry of the Environment	Director
Katherine Forbes-Smith	Government of The Bahamas	President of the Senate, NEMA's Grand Bahama Coordinator
Lucius Lake	CDEMA	EOC Freeport Coordination
Dennis Marcelle	CDEMA	EOC Freeport Coordination
Nick Benson	Equinor	Emergency response coordination
Christine Wigand	Equinor	Communication
Lou Carroll	Sanitation Services	General Manager

## List of identified construction companies operating on Grand Bahama

- Freeport Construction
- Bahamas Hot Mix
- Waugh Construction



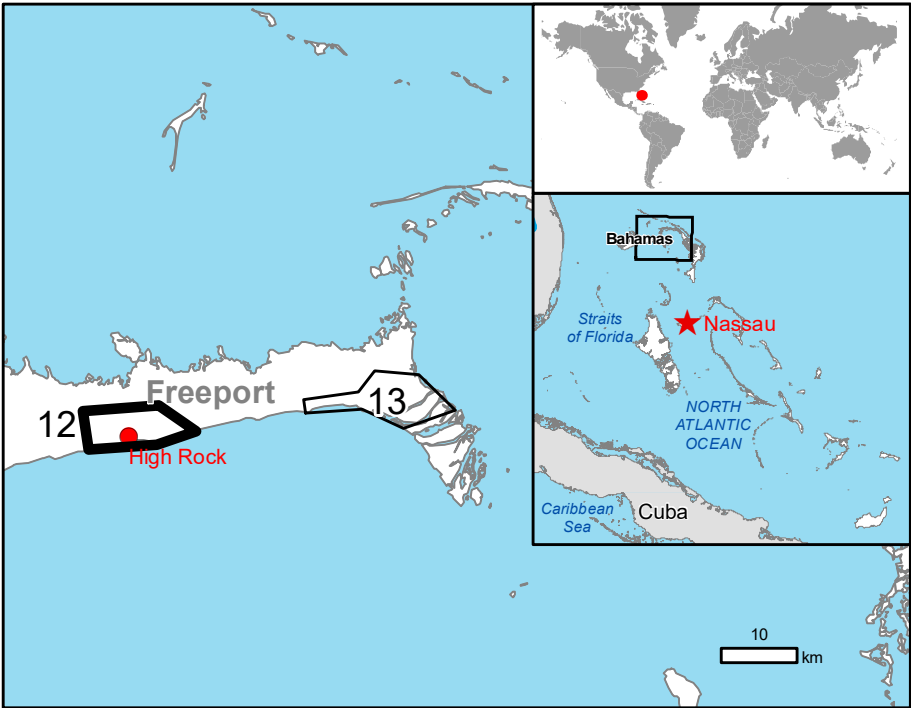


GLIDE number: TC-2019-000099-BHS Activation ID: EMSR385  
Int. Charter call ID: 714 Product N.: 12HIGHROCK, v3

## High Rock - BAHAMAS

### Tropical Cyclone - Situation as of 06/09/2019

#### Grading - Overview map 01



#### Cartographic Information

1:24000 Full color A1, 200 dpi resolution

0 0,5 1 2 km

Grid: WGS 1984 UTM Zone 17N map coordinate system  
Tick marks: WGS 84 geographical coordinate system

#### Legend

- Crisis Information**
  - Flooded Area (05/09/2019 15:51 UTC)
  - Chemical spill
  - Flood trace
- Built Up Grading**
  - Destroyed
  - Damaged
  - Possibly damaged
- Transportation Grading**
  - Road, Destroyed
  - Road, Damaged
  - Road, Possibly damaged
  - Road, No visible damage
- Facilities Grading**
  - Heavy industrial plant, Destroyed
  - Heavy industrial plant, Damaged
- General Information**
  - Area of Interest
  - Image Footprint
  - Not Analysed
- Placenames**
  - Placename
- Hydrography**
  - Coastline
  - Open Water

Consequences within the AOI		Unit of measurement	Destroyed	Damaged	Possibly damaged	Total affected	Total in AOI
Flooded area		ha				20,8	
Flood trace		ha				310,5	
Chemical spill		ha				36,5	
Road blocks		No				10	
Estimated population						660	663
Settlements		Number of inhabitants					
Transportation	Residential	No	175	44	1	220	221
	Secondary Road	km	0,2	1,5	1,2	2,9	14,7
	Local Road	km	1,9	6,6	3,5	12,0	14,6
	Canal, Track	km	0,9	4,6	1,6	11,2	16,3
Facilities		No	20	14	0	34	34
		Chemical plant construction and heavy industrial plant					

#### Map Information

The tropical cyclone Dorian-19 made landfall in Bahamas on 1 September 2019 as a category 5 hurricane. It affected mainly the Great Abaco and Grand Bahama islands (northern Bahamas) with sustained maximum winds of 235 km / h. It brought heavy rains which produced spreaded flooding, power outages and destructions to infrastructure elements (roads, airports, ports), houses and administrative buildings. Authorities reports 76.000 people affected, also injured and dead. The assessment of the damage is ongoing. The ERCC has triggered the EMS COPERNICUS with the aim to provide first estimate products as well as grading maps over the affected areas.

The present map shows the damage grade assessment in the area of High Rock. The thematic layer has been derived from two post-event satellite images by means of visual interpretation. "Not analysed" indicates an area that could not be analysed in any of the post-event images. The background image is from 06/09/2019. The estimated geometric accuracy (RMSE) is 2,5 m or better, from native positional accuracy of the background satellite image.

#### Relevant date records (UTC)

Event	01/09/2019 18:00	Situation as of	06/09/2019 15:44
Activation	01/09/2019 08:12	Map production	10/09/2019

#### Data sources

Pre-event image: Pléiades-1A/B © CNES (2019), distributed by Airbus DS (acquired on 15/08/2019 at 16:00 UTC, GSD 0.5 m, approx. 0.4% cloud coverage in AoI, 13.6° off-nadir angle), provided by International Charter (call ID 714), all rights reserved.  
Post-event image: Pléiades-1A/B © CNES (2019), distributed by Airbus DS (acquired on 06/09/2019 at 15:44 UTC, GSD 0.5 m, approx. 32.6% cloud coverage in AoI, 33.9° off-nadir angle), provided by International Charter (call ID 714), all rights reserved.  
Pléiades-1A/B © CNES (2019), distributed by Airbus DS (acquired on 05/09/2019 at 15:51 UTC, GSD 0.5 m, approx. 44.7% cloud coverage in AoI, 36.5° off-nadir angle), provided by International Charter (call ID 714), all rights reserved.

Base vector layers: OpenStreetMap © OpenStreetMap contributors, Wikimapia.org, GeoNames 2015,  
Inset maps: JRC 2013, Natural Earth 2012, GeoNames 2013.

#### Disclaimer

Products elaborated in this Copernicus EMS Rapid Mapping activity are realized to the best of our ability, within a very short time frame, optimising the available data and information. All geographic information has limitations due to scale, resolution, date and interpretation of the original sources. No liability concerning the contents or the use thereof is assumed by the producer and by the European Union.

Delivery formats are Layered Geospatial PDF, GeoJPEG and vector (ESRI shapefiles, Google Earth KML, GeoJSON).

Map produced by SERTIT released by e-GEOS (ODD).

For the latest version of this map and related products visit <http://emergency.copernicus.eu/EMSR385>

For full Copyright notice visit <http://emergency.copernicus.eu/mapping/emr/cite-copernicus-ems-mapping-portal>







Product Name: CHAD DOBA SWEET HEAVY CRUDE  
Revision Date: 20 Apr 2011  
Page 1 of 13

## SAFETY DATA SHEET

### SECTION 1 PRODUCT AND COMPANY IDENTIFICATION

#### PRODUCT

Product Name: CHAD DOBA SWEET HEAVY CRUDE  
Product Description: Petroleum Crude Oil  
Product Code: 945232-60  
Intended Use: Crude oil

#### COMPANY IDENTIFICATION

Supplier: EXXONMOBIL REFINING & SUPPLY  
BUSINESS COORDINATION CENTRE  
HERMESLAAN 2  
1831 MACHELEN, BEL  
Belgium

MSDS Internet Address  
E-Mail

[www.msds.exxonmobil.com](http://www.msds.exxonmobil.com)  
[sds.bnl@exxonmobil.com](mailto:sds.bnl@exxonmobil.com)

This SDS meets the EU Safety Data Sheet requirements for this material, with the following exceptions: 1) Supplier address and relevant telephone numbers refer to an ExxonMobil Europe coordination center, but the actual supply may come from another affiliate of ExxonMobil in Europe; and 2) No country specific information is included.

### SECTION 2 HAZARDS IDENTIFICATION

This material is dangerous according to regulatory guidelines (see (M)SDS Section 15).

**CLASSIFICATION:** | R10 | Carc. Cat. 2; R45 | Xn; R48/21/22 | R66 | R67 | N; R51/53 |

#### PHYSICAL / CHEMICAL HAZARDS

Flammable. Material can release vapours that readily form flammable mixtures. Vapour accumulation could flash and/or explode if ignited. Material can accumulate static charges which may cause an ignition.

#### HEALTH HAZARDS

May cause cancer. Harmful: danger of serious damage to health by prolonged exposure in contact with skin and if swallowed. Repeated exposure may cause skin dryness or cracking. Vapours may cause drowsiness and dizziness. Under conditions of poor personal hygiene and prolonged repeated contact, some polycyclic aromatic compounds (PACs) have been suspected as a cause of skin cancer in humans. Hydrogen sulphide, a highly toxic gas, may be present. Signs and symptoms of overexposure to hydrogen sulphide include respiratory and eye irritation, dizziness, nausea, coughing, a sensation of dryness and pain in the nose, and loss of consciousness. Odour does not provide a reliable indicator of the presence of hazardous levels in the atmosphere. Excessive exposure may result in eye, skin, or respiratory irritation. Aliphatic hydrocarbon gases



Product Name: CHAD DOBA SWEET HEAVY CRUDE

Revision Date: 20 Apr 2011

Page 2 of 13

may build up in confined spaces and may cause dizziness, light-headedness, headache, nausea and loss of coordination. Continued inhalation may result in narcosis, unconsciousness, and possibly lead to death. May cause central nervous system depression. High-pressure injection under skin may cause serious damage.

#### ENVIRONMENTAL HAZARDS

Toxic to aquatic organisms, may cause long-term adverse effects in the aquatic environment.

**NOTE:** This material should not be used for any other purpose than the intended use in Section 1 without expert advice. Health studies have shown that chemical exposure may cause potential human health risks which may vary from person to person.

### SECTION 3 - COMPOSITION / INFORMATION ON INGREDIENTS

This material is regulated as a complex substance.

**Reportable hazardous substance(s) or complex substance(s) complying with the classification criteria and/or with an exposure limit (OEL)**

Name	CAS#	EC#	Registration#	Concentration*	Symbols/Risk Phrases
PETROLEUM CRUDE OIL	8002-05-9	232-298-5	NE	100 %	R10, T;Carc. Cat. 2;R45, Xn;R48/21, Xn;R48/22, R66, R67, N;R51/53, Note H

**Reportable Hazardous Constituent(s) Contained in Complex Substance(s) complying with the classification criteria and/or with an exposure limit (OEL)**

Name	CAS#	EC#	Concentration*	Symbols/Risk Phrases
NAPHTHALENE	91-20-3	202-049-5	< 0.5%	Xn;R22, Xn;Carc. Cat. 3;R40, N;R50/53

\* All concentrations are percent by weight unless ingredient is a gas. Gas concentrations are in percent by volume.

Note: See (M)SDS Section 16 for full text of the R-Phrases. See (M)SDS Section 16 for full text of hazard statements.

### SECTION 4 FIRST AID MEASURES

#### INHALATION

Remove from further exposure. For those providing assistance, avoid exposure to yourself or others. Use adequate respiratory protection. If respiratory irritation, dizziness, nausea, or unconsciousness occurs, seek immediate medical assistance. If breathing has stopped, assist ventilation with a mechanical device or use mouth-to-mouth resuscitation. Immediately remove from further exposure. Get immediate medical assistance. For those providing assistance, avoid exposure to yourself or others. Use adequate respiratory protection. Give supplemental oxygen, if available. If breathing has stopped, assist ventilation with a mechanical device.

#### SKIN CONTACT

Wash contact areas with soap and water. Remove contaminated clothing. Launder contaminated clothing



Product Name: CHAD DOBA SWEET HEAVY CRUDE

Revision Date: 20 Apr 2011

Page 3 of 13

before reuse. Remove contaminated clothing. Dry wipe exposed skin and cleanse with waterless hand cleaner and follow by washing thoroughly with soap and water. For those providing assistance, avoid further skin contact to yourself or others. Wear impervious gloves. Launder contaminated clothing separately before reuse. Discard contaminated articles that cannot be laundered. If product is injected into or under the skin, or into any part of the body, regardless of the appearance of the wound or its size, the individual should be evaluated immediately by a physician as a surgical emergency. Even though initial symptoms from high pressure injection may be minimal or absent, early surgical treatment within the first few hours may significantly reduce the ultimate extent of injury. For hot product: Immediately immerse in or flush affected area with large amounts of cold water to dissipate heat. Cover with clean cotton sheeting or gauze and get prompt medical attention.

#### EYE CONTACT

Flush thoroughly with water for at least 15 minutes. Get medical assistance.

#### INGESTION

Seek medical attention.

<b>SECTION 5</b>	<b>FIRE FIGHTING MEASURES</b>
------------------	-------------------------------

#### EXTINGUISHING MEDIA

**Appropriate Extinguishing Media:** Use water fog, foam, dry chemical or carbon dioxide (CO<sub>2</sub>) to extinguish flames.

**Inappropriate Extinguishing Media:** Straight streams of water

#### FIRE FIGHTING

**Fire Fighting Instructions:** FLAMMABLE. Evacuate area. If a leak or spill has not ignited, use water spray to disperse the vapours and to protect personnel attempting to stop a leak. Prevent run-off from fire control or dilution from entering streams, sewers or drinking water supply. Fire-fighters should use standard protective equipment and in enclosed spaces, self-contained breathing apparatus (SCBA). Use water spray to cool fire exposed surfaces and to protect personnel.

**Unusual Fire Hazards:** FLAMMABLE. Vapour is flammable and heavier than air. Vapour may travel across the ground and reach remote ignition sources, causing a flashback fire danger. Exposure to fire can generate toxic fumes. Hazardous material. Firefighters should consider protective equipment indicated in Section 8.

**Hazardous Combustion Products:** Hydrogen sulphide, Smoke, Fume, Sulphur oxides, Incomplete combustion products, Oxides of carbon

#### FLAMMABILITY PROPERTIES

**Flash Point [Method]:** 37C (99F) - 47C (117F) [ASTM D-56]

**Flammable Limits (Approximate volume % in air):** LEL: N/D UEL: N/D

**Autoignition Temperature:** N/D

<b>SECTION 6</b>	<b>ACCIDENTAL RELEASE MEASURES</b>
------------------	------------------------------------





Product Name: CHAD DOBA SWEET HEAVY CRUDE

Revision Date: 20 Apr 2011

Page 4 of 13

## NOTIFICATION PROCEDURES

In the event of a spill or accidental release, notify relevant authorities in accordance with all applicable regulations.

## PROTECTIVE MEASURES

Avoid contact with spilled material. Warn or evacuate occupants in surrounding and downwind areas if required, due to toxicity or flammability of the material. See Section 5 for fire fighting information. See the Hazard Identification Section for Significant Hazards. See Section 4 for First Aid Advice. See Section 8 for advice on the minimum requirements for personal protective equipment. Additional protective measures may be necessary, depending on the specific circumstances and/or the expert judgment of the emergency responders. For emergency responders: Respiratory protection: half-face or full-face respirator with filter(s) for organic vapor and, when applicable, H<sub>2</sub>S, or Self Contained Breathing Apparatus (SCBA) can be used depending on the size of spill and potential level of exposure. If the exposure cannot be completely characterized or an oxygen deficient atmosphere is possible or anticipated, SCBA is recommended. Chemical goggles are recommended if splashes or contact with eyes is possible. Work gloves that are resistant to aromatic hydrocarbons are recommended. If contact with hot product is possible or anticipated, gloves should be heat-resistant and thermally insulated. Note: gloves made of PVA are not water-resistant, and are not suitable for emergency use. Small spills: normal antistatic work clothes are usually adequate. Large spills: full body suit of chemical resistant, antistatic and, if necessary, heat resistant and thermal insulated material is recommended.

## SPILL MANAGEMENT

**Land Spill:** Eliminate all ignition sources (no smoking, flares, sparks or flames in immediate area). Stop leak if you can do so without risk. All equipment used when handling the product must be grounded. Do not touch or walk through spilled material. Prevent entry into waterways, sewer, basements or confined areas. A vapour-suppressing foam may be used to reduce vapour. Use clean non-sparking tools to collect absorbed material. Absorb or cover with dry earth, sand or other non-combustible material and transfer to containers. Large Spills: Water spray may reduce vapour, but may not prevent ignition in enclosed spaces. Small Spills: Absorb with earth, sand or other non-combustible material and transfer to containers for later disposal. If liquid is too viscous for pumping, shovel it up into a suitable container for recycle or disposal.

**Water Spill:** Stop leak if you can do so without risk. Warn other shipping. Remove from the surface by skimming or with suitable absorbents. If permitted by regulatory authorities, the use of suitable dispersants should be considered where permitted in local oil spill contingency plans.

Water spill and land spill recommendations are based on the most likely spill scenario for this material; however, geographic conditions, wind, temperature, (and in the case of a water spill) wave and current direction and speed may greatly influence the appropriate action to be taken. For this reason, local experts should be consulted. Note: Local regulations may prescribe or limit action to be taken.

## ENVIRONMENTAL PRECAUTIONS

Remove debris in path of spill prior to oiling and remove contaminated debris from shoreline and water surface. Dispose of according to local regulations. Use booms as a barrier to protect shorelines. Use containment booms when the ambient temperature is below the flash point of the material. Large Spills: Dyke far ahead of liquid spill for later recovery and disposal. Prevent entry into waterways, sewers, basements or confined areas.

## SECTION 7

## HANDLING AND STORAGE

### HANDLING

Avoid all personal contact. Prevent exposure to ignition sources, for example use non-sparking tools and explosion-proof equipment. Potentially toxic/irritating fumes/vapour may be evolved from heated or agitated material. Use only with adequate ventilation. Harmful amounts of H<sub>2</sub>S may be present. Prevent small spills



Product Name: CHAD DOBA SWEET HEAVY CRUDE

Revision Date: 20 Apr 2011

Page 5 of 13

and leakage to avoid slip hazard. Material can accumulate static charges which may cause an electrical spark (ignition source). Use proper bonding and/or ground procedures. However, bonding and grounds may not eliminate the hazard from static accumulation. Consult local applicable standards for guidance. Additional references include American Petroleum Institute 2003 (Protection Against Ignitions Arising out of Static, Lightning and Stray Currents) or National Fire Protection Agency 77 (Recommended Practice on Static Electricity) or CENELEC CLC/TR 50404 (Electrostatics - Code of practice for the avoidance of hazards due to static electricity).

**Static Accumulator:** This material is a static accumulator. A liquid is typically considered a nonconductive, static accumulator if its conductivity is below 100 pS/m ( $100 \times 10^{-12}$  Siemens per meter) and is considered a semiconductive, static accumulator if its conductivity is below 10,000 pS/m. Whether a liquid is nonconductive or semiconductive, the precautions are the same. A number of factors, for example liquid temperature, presence of contaminants, anti-static additives and filtration can greatly influence the conductivity of a liquid.

#### STORAGE

Ample fire water supply should be available. A fixed sprinkler/deluge system is recommended. The container choice, for example storage vessel, may effect static accumulation and dissipation. Keep container closed. Handle containers with care. Open slowly in order to control possible pressure release. Store in a cool, well-ventilated area. Outside or detached storage preferred. Storage containers should be earthed and bonded. Fixed storage containers, transfer containers and associated equipment should be earthed and bonded to prevent accumulation of static charge.

**SPECIFIC END USES:** Section 1 informs about identified end-uses. No industrial or sector specific guidance available.

### SECTION 8

### EXPOSURE CONTROLS / PERSONAL PROTECTION

#### EXPOSURE LIMIT VALUES

Exposure limits/standards (Note: Exposure limits are not additive)

Substance Name	Form	Limit/Standard			Note	Source
NAPHTHALENE		STEL	15 ppm		Skin	ACGIH
NAPHTHALENE		TWA	10 ppm		Skin	ACGIH
Hydrogen sulphide		STEL	14 mg/m <sup>3</sup>	10 ppm		ExxonMobil
Hydrogen sulphide		TWA	7 mg/m <sup>3</sup>	5 ppm		ExxonMobil
Hydrogen sulphide		STEL	5 ppm			ACGIH
Hydrogen sulphide		TWA	1 ppm			ACGIH

Note: Information about recommended monitoring procedures can be obtained from the relevant agency(ies)/institute(s):

UK Health and Safety Executive (HSE)

#### ENGINEERING CONTROLS



Product Name: CHAD DOBA SWEET HEAVY CRUDE

Revision Date: 20 Apr 2011

Page 6 of 13

The level of protection and types of controls necessary will vary depending upon potential exposure conditions. Control measures to consider:

Use explosion-proof ventilation equipment to stay below exposure limits.

## PERSONAL PROTECTION

Personal protective equipment selections vary based on potential exposure conditions such as applications, handling practices, concentration and ventilation. Information on the selection of protective equipment for use with this material, as provided below, is based upon intended, normal usage.

**Respiratory Protection:** If engineering controls do not maintain airborne contaminant concentrations at a level which is adequate to protect worker health, an approved respirator may be appropriate. Respirator selection, use, and maintenance must be in accordance with regulatory requirements, if applicable. Types of respirators to be considered for this material include:

Positive-pressure, air-supplied respirator in areas where H<sub>2</sub>S vapours may accumulate is recommended. European Committee for Standardization (CEN) standards EN 136, 140 and 405 provide respirator masks and EN 149 and 143 provide filter recommendations.

For high airborne concentrations, use an approved supplied-air respirator, operated in positive pressure mode. Supplied air respirators with an escape bottle may be appropriate when oxygen levels are inadequate, gas/vapour warning properties are poor, or if air purifying filter capacity/rating may be exceeded.

**Hand Protection:** Any specific glove information provided is based on published literature and glove manufacturer data. Glove suitability and breakthrough time will differ depending on the specific use conditions. Contact the glove manufacturer for specific advice on glove selection and breakthrough times for your use conditions. Inspect and replace worn or damaged gloves. The types of gloves to be considered for this material include:

Chemical resistant gloves are recommended. If contact with forearms is likely wear gauntlet style gloves. Nitrile, Viton, CEN standards EN 420 and EN 374 provide general requirements and lists of glove types.

**Eye Protection:** Chemical goggles are recommended.

**Skin and Body Protection:** Any specific clothing information provided is based on published literature or manufacturer data. The types of clothing to be considered for this material include:

Chemical / oil resistant clothing if contact with material is likely.

**Specific Hygiene Measures:** Always observe good personal hygiene measures, such as washing after handling the material and before eating, drinking, and/or smoking. Routinely wash work clothing and protective equipment to remove contaminants. Discard contaminated clothing and footwear that cannot be cleaned. Practice good housekeeping.

## ENVIRONMENTAL CONTROLS

See Sections 6, 7, 12, 13.

## SECTION 9

## PHYSICAL AND CHEMICAL PROPERTIES





Product Name: CHAD DOBA SWEET HEAVY CRUDE  
Revision Date: 20 Apr 2011  
Page 7 of 13

Typical physical and chemical properties are given below. Consult the Supplier in Section 1 for additional data.

#### GENERAL INFORMATION

Physical State: Liquid  
Colour: Black  
Odour: Petroleum/Solvent  
Odour Threshold: N/D

#### IMPORTANT HEALTH, SAFETY, AND ENVIRONMENTAL INFORMATION

Relative Density (at 15 C): 0.923  
Flash Point [Method]: 37C (99F) - 47C (117F) [ASTM D-56]  
Flammable Limits (Approximate volume % in air): LEL: N/D UEL: N/D  
Autoignition Temperature: N/D  
Boiling Point / Range: > 18C (64F)  
Vapour Density (Air = 1): N/D  
Vapour Pressure: < 13.3 kPa (100 mm Hg) at 20°C  
Evaporation Rate (n-butyl acetate = 1): N/D  
pH: N/A  
Log Pow (n-Octanol/Water Partition Coefficient): N/D  
Solubility in Water: Negligible  
Viscosity: 290 cSt (290 mm<sup>2</sup>/sec) at 40°C | 25 cSt (25 mm<sup>2</sup>/sec) at 100C  
Explosive Properties: N/D  
Oxidizing Properties: See Hazards Identification Section.

#### OTHER INFORMATION

Freezing Point: N/D  
Melting Point: N/A  
Pour Point: -6°C (21°F)

SECTION 10	STABILITY AND REACTIVITY
------------	--------------------------

**STABILITY:** Material is stable under normal conditions.

**CONDITIONS TO AVOID:** Avoid heat, sparks, open flames and other ignition sources.

**MATERIALS TO AVOID:** Strong oxidisers

**HAZARDOUS DECOMPOSITION PRODUCTS:** Material does not decompose at ambient temperatures.

**HAZARDOUS POLYMERIZATION:** Will not occur.

SECTION 11	TOXICOLOGICAL INFORMATION
------------	---------------------------

#### ACUTE TOXICITY

Route of Exposure	Conclusion / Remarks
Inhalation	
Toxicity: Data available.	Not determined. Based on test data for structurally similar

Product Name: CHAD DOBA SWEET HEAVY CRUDE

Revision Date: 20 Apr 2011

Page 8 of 13

	materials.
Irritation: Data available.	Elevated temperatures or mechanical action may form vapours, mist, or fumes which may be irritating to the eyes, nose, throat, or lungs. Based on test data for structurally similar materials.
<b>Ingestion</b>	
Toxicity (Rat): LD50 > 5000 mg/kg	Minimally Toxic. Based on test data for structurally similar materials.
<b>Skin</b>	
Toxicity (Rabbit): LD50 > 2000 mg/kg	Minimally Toxic. Based on test data for structurally similar materials.
Irritation (Rabbit): Data available.	May dry the skin leading to discomfort and dermatitis. Based on test data for structurally similar materials.
<b>Eye</b>	
Irritation (Rabbit): Data available.	Irritating and will injure eye tissue. Based on test data for structurally similar materials.

## CHRONIC/OTHER EFFECTS

### For the product itself:

Vapour/aerosol concentrations above recommended exposure levels are irritating to the eyes and respiratory tract, may cause headaches, dizziness, anaesthesia, drowsiness, unconsciousness and other central nervous system effects including death. May cause central nervous system disorder (e.g., narcosis involving a loss of coordination, weakness, fatigue, mental confusion and blurred vision) and/or damage.

Crude oil: Contains polycyclic aromatic compounds (PACs). Prolonged and / or repeated exposure by skin or inhalation of certain PACs may cause cancer of the skin, lung, and of other sites of the body. In animal studies, some crudes produced skin tumors in mice, while other crudes produced no tumors. Developmental studies of crude oil in lab animals showed reduced fetal weight and increased fetal resorptions at maternally toxic levels. Repeated dermal exposure to crude oils in rats resulted in toxicity to the blood, liver, thymus, and bone marrow.

### Contains:

**HYDROGEN SULPHIDE:** Chronic health effects due to repeated exposures to low levels of H<sub>2</sub>S have not been established. High level (700 ppm) acute exposure can result in sudden death. High concentrations will lead to cardiopulmonary arrest due to nervous system toxicity and pulmonary edema. Lower levels (150 ppm) may overwhelm sense of smell, eliminating warning of exposure. Symptoms of overexposure to H<sub>2</sub>S include headache, fatigue, insomnia, irritability, and gastrointestinal problems. Repeated exposures to approximately 25 ppm will irritate mucous membranes and the respiratory system and have been implicated in some eye damage. **NAPHTHALENE:** Exposure to high concentrations of naphthalene may cause destruction of red blood cells, anemia, and cataracts. Naphthalene caused cancer in laboratory animal studies, but the relevance of these findings to humans is uncertain.

Additional information is available by request.

## SECTION 12

## ECOLOGICAL INFORMATION

The information given is based on data available for the material, the components of the material, and similar materials.

## ECOTOXICITY

Material -- Expected to be toxic to aquatic organisms. May cause long-term adverse effects in the aquatic environment.



Product Name: CHAD DOBA SWEET HEAVY CRUDE

Revision Date: 20 Apr 2011

Page 9 of 13

#### MOBILITY

More volatile component -- Highly volatile, will partition rapidly to air. Not expected to partition to sediment and wastewater solids.

Less volatile component -- Low solubility and floats and is expected to migrate from water to the land.

Expected to partition to sediment and wastewater solids.

#### PERSISTENCE AND DEGRADABILITY

##### Biodegradation:

Low molecular wt. component -- Expected to be inherently biodegradable

High molecular wt. component -- Expected to be persistent.

##### Photolysis:

More water soluble component -- Expected to degrade at a moderate rate in water when exposed to sunlight.

##### Atmospheric Oxidation:

More volatile component -- Expected to degrade rapidly in air

#### BIOACCUMULATION POTENTIAL

Components -- Has the potential to bioaccumulate.

#### ECOLOGICAL DATA

Component	Acute Aquatic Toxicity
NAPHTHALENE	L(E)C50 >0.1 - 1 mg/L

#### SECTION 13 DISPOSAL CONSIDERATIONS

Disposal recommendations based on material as supplied. Disposal must be in accordance with current applicable laws and regulations, and material characteristics at time of disposal.

#### DISPOSAL RECOMMENDATIONS

Product is suitable for burning in an enclosed controlled burner for fuel value or disposal by supervised incineration at very high temperatures to prevent formation of undesirable combustion products.

#### REGULATORY DISPOSAL INFORMATION

**European Waste Code:** 05 01 05\*

NOTE: These codes are assigned based upon the most common uses for this material and may not reflect contaminants resulting from actual use. Waste producers need to assess the actual process used when generating the waste and its contaminants in order to assign the proper waste disposal code(s).

This material is considered as hazardous waste pursuant to Directive 91/689/EEC on hazardous waste, and subject to the provisions of that Directive unless Article 1(5) of that Directive applies.

**Empty Container Warning** Empty Container Warning (where applicable): Empty containers may contain residue and





Product Name: CHAD DOBA SWEET HEAVY CRUDE

Revision Date: 20 Apr 2011

Page 10 of 13

can be dangerous. Do not attempt to refill or clean containers without proper instructions. Empty drums should be completely drained and safely stored until appropriately reconditioned or disposed. Empty containers should be taken for recycling, recovery, or disposal through suitably qualified or licensed contractor and in accordance with governmental regulations. DO NOT PRESSURISE, CUT, WELD, BRAZE, SOLDER, DRILL, GRIND, OR EXPOSE SUCH CONTAINERS TO HEAT, FLAME, SPARKS, STATIC ELECTRICITY, OR OTHER SOURCES OF IGNITION. THEY MAY EXPLODE AND CAUSE INJURY OR DEATH.

<b>SECTION 14</b>	<b>TRANSPORT INFORMATION</b>
-------------------	------------------------------

**LAND (ADR/RID)**

Proper Shipping Name: PETROLEUM CRUDE OIL

Hazard Class: 3

Classification Code: F1

UN Number: 1267

Packing Group: I

Label(s) / Mark(s): 3, EHS

Hazard ID Number: 33

Hazchem EAC: 3WE

Transport Document Name: UN1267, PETROLEUM CRUDE OIL, 3, PG I

**INLAND WATERWAYS (ADNR/ADN)**

Proper Shipping Name: PETROLEUM CRUDE OIL

Proper Shipping Name Suffix: vp50 > 175 kPa

Hazard Class: 3

Hazard ID Number: 33

UN or ID Number: 1267

Packing Group: I

Label(s) / Mark(s): 3 (CMR, N2), EHS

Transport Document Name: UN1267, PETROLEUM CRUDE OIL, vp50 > 175 kPa, 3 (CMR, N2), PG I

**SEA (IMDG)**

Proper Shipping Name: PETROLEUM CRUDE OIL

Hazard Class & Division: 3

UN Number: 1267

Packing Group: I

Marine Pollutant: Yes

Label(s): 3

EMS Number: F-E, S-E

Transport Document Name: UN1267, PETROLEUM CRUDE OIL, 3, PG I, (37°C c.c.), MARINE POLLUTANT

**AIR (IATA)**

Proper Shipping Name: PETROLEUM CRUDE OIL

Hazard Class & Division: 3

UN Number: 1267

Packing Group: I

Label(s) / Mark(s): 3

Transport Document Name: UN1267, PETROLEUM CRUDE OIL, 3, PG I

<b>SECTION 15</b>	<b>REGULATORY INFORMATION</b>
-------------------	-------------------------------

**REACH Information:** A Chemical Safety Assessment has not been carried out for the substance(s) that make up this

Product Name: CHAD DOBA SWEET HEAVY CRUDE  
Revision Date: 20 Apr 2011  
Page 11 of 13

material or for the material itself.

**Material is dangerous as defined by the EU Dangerous Substances/Preparations Directives.**

**CLASSIFICATION:** Flammable. Category 2 Carcinogen. Harmful. Dangerous for the environment.

**EU LABELING:**

**Symbol:** T, N



**Nature of Special Risk:** R10; Flammable. R45; May cause cancer. R48/21/22; Harmful: danger of serious damage to health by prolonged exposure in contact with skin and if swallowed. R66; Repeated exposure may cause skin dryness or cracking. R67; Vapours may cause drowsiness and dizziness. R51/53; Toxic to aquatic organisms, may cause long-term adverse effects in the aquatic environment.

**Safety Advice:** S36; Wear suitable protective clothing. S45; In case of accident or if you feel unwell, seek medical advice immediately (show the label where possible). S53; Avoid exposure - obtain special instructions before use. S61; Avoid release to the environment. Refer to special instructions/safety data sheets. S62; If swallowed, do not induce vomiting: seek medical advice immediately and show this container or label.

**Contains:** PETROLEUM CRUDE OIL

## REGULATORY STATUS AND APPLICABLE LAWS AND REGULATIONS

**Complies with the following national/regional chemical inventory requirements:** IECSC, TSCA, EINECS, PICCS, AICS, ENCS, DSL, KECI

### Applicable EU Directives and Regulations:

#### EU Directive:

1907/2006 [... on the Registration, Evaluation, Authorisation and Restriction of Chemicals ... and amendments thereto]

92/85/EEC [...pregnant workers...recently given birth or...breastfeeding directive]

94/33/EC [...on the protection of young people at work]

This product is subject to the provisions of the EU Marketing and Use Directive (Directive 76/769/EEC) and is restricted to professional users.

850/2004/EC [...on prohibiting and restricting persistent organic pollutants ... and amendments thereto]

96/82/EC as extended by 2003/105/EC [ ... on the control of major-accident hazards involving dangerous substances]. Product contains a substance that falls within the criteria defined in Annex I. Refer to Directive for details



Product Name: CHAD DOBA SWEET HEAVY CRUDE  
Revision Date: 20 Apr 2011  
Page 12 of 13

of requirements taking into account the volume of product stored on site.  
2004/37/EC [... on the protection of workers from the risks related to carcinogens or mutagens...].  
98/24/EC [... on the protection of workers from the risk related to chemical agents at work ...]. Refer to  
Directive for details of requirements.

## SECTION 16

## OTHER INFORMATION

### KEY TO THE RISK CODES CONTAINED IN SECTION 2 AND 3 OF THIS DOCUMENT (for information only):

R10; Flammable.  
R22; Harmful if swallowed.  
R40; Limited evidence of a carcinogenic effect.  
R45; May cause cancer.  
R48/21; Harmful: danger of serious damage to health by prolonged exposure in contact with skin.  
R48/22; Harmful: danger of serious damage to health by prolonged exposure if swallowed.  
R50/53; Very toxic to aquatic organisms, may cause long-term adverse effects in the aquatic environment.  
R51/53; Toxic to aquatic organisms, may cause long-term adverse effects in the aquatic environment.  
R66; Repeated exposure may cause skin dryness or cracking.  
R67; Vapours may cause drowsiness and dizziness.

### THIS SAFETY DATA SHEET CONTAINS THE FOLLOWING REVISIONS:

Safety Data Sheet updated in accordance with the provisions of REACH (EC) No 1907/2006.

**THIS SDS COVERS THE FOLLOWING MATERIALS:** CRUDE OIL SWEET ( "Sweet" applied SPE definition for oils containing sulfur compounds < 1%)

The information and recommendations contained herein are, to the best of ExxonMobil's knowledge and belief, accurate and reliable as of the date issued. You can contact ExxonMobil to insure that this document is the most current available from ExxonMobil. The information and recommendations are offered for the user's consideration and examination. It is the user's responsibility to satisfy itself that the product is suitable for the intended use. If buyer repackages this product, it is the user's responsibility to insure proper health, safety and other necessary information is included with and/or on the container. Appropriate warnings and safe-handling procedures should be provided to handlers and users. Alteration of this document is strictly prohibited. Except to the extent required by law, re-publication or retransmission of this document, in whole or in part, is not permitted. The term, "ExxonMobil" is used for convenience, and may include any one or more of ExxonMobil Chemical Company, Exxon Mobil Corporation, or any affiliates in which they directly or indirectly hold any interest.

Internal Use Only

MHC: 0, 0, 0, 2, 1, 1

PPEC: DVF

DGN: 7063076 (1011064)

## ANNEX





Product Name: CHAD DOBA SWEET HEAVY CRUDE  
Revision Date: 20 Apr 2011  
Page 13 of 13

---

Annex not required for this material.